

233 Pumps with Data Logger QuickData



The 233 centralized lubrication pump is a powerful and robust compact multi-line pump that can drive up to 3 elements and is used in progressive (Quicklub or Modular Lube) automated lubrication systems. The 233 is ideal for mobile applications, rental machines and construction machines. Versatile, compact and economical, this pump is enhanced with low-level control, printed circuit board MDF00 with attached data logger module and a keypad with display.

QuickData Displays

- Current status and operating data
- Malfunctions of the lubrication system with the time of occurrence
- Remediating of the malfunction with date, time and duration of malfunction
- Low-level signal of reservoir and regular refilling
- Modifications in the pause time programming
- Number of automatically and manually triggered lube cycles as well as the corresponding lubricant consumption
- Power supply interruptions

All data can be read out by means of a laptop or p.d.a. via an integrated or separate IR interface. All indications enable the users to draw their conclusions regarding the condition, function, reliability, usability and duration of service of the machine or the device. All information can be analyzed and documented and is then available as a written protocol.



Pump233

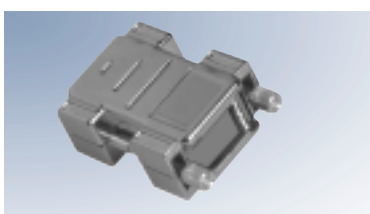
The family of 233 pumps includes 12 and 24 VDC pumps. They are available with 1, 2 or 3 elements in 5, 6 or 7 mm or with an adjustable output element. Reservoir sizes are 2, 4 or 8 liters. Refer to the pump identification code for a complete listing of available pump configurations.

Models

Part No.	Model	Power	Reservoir Capacity			Grease	Low-Level Control	Printed Circuit Board
			Liters	In ³	Lbs.			
644-40824-1	P233-2XL-1K6-24-2A5.10-MDF00	24 VDC	2	122	4	grease	yes	yes
644-40824-2	P233-2XLBO-1K6-24-2A5.10-MDF00	24 VDC	2	122	4	grease	yes	yes
644-40826-1	P233-4XLBO-1K6-24-2A5.10-MDF00	24 VDC	4	244	8	grease	yes	yes
644-40827-1	P233-8XLBO-1K6-24-2A5.10-MDF00	24 VDC	8	488	16	grease	yes	yes

These pumps do not include a pressure relief valve which must be ordered separately.

Other technical data and dimensions are identical to the P203.



Infrared Interface

Accessories

designation	part no.
infrared interface	236-10127-1
diagnostic software	810-55291-1
piston detector	234-13188-2