

# Typical Installations

## Two Oil Products



### Standpipe, Pump Station, Basement Tanks<sup>1</sup>

#### Bill of Materials

Model	Code	Req'd.	Description
V30500SSU	1	1	PMV 5:1 Pump Hose Air & Fluid Connectors
V41000SSU	2	1	PMV 10:1 Stub/Universal Pump w/ Hose & Connectors
602136	3	2	Modular Airline Regulator and Filter w/ Gauge 3/8" NPT(f)
***	4	*	5/8" OD Tube Elbow 1/2" NPT(f)
***	5	*	Hi-Pressure Tubing 5/8" OD x .083 Wall **
82439	6	2	Low Level Cut-Off 1 1/2" NPT(f)
***	7	2	275-Gallon Ob-round Tank

<sup>1</sup> Underground tanks would be similar.

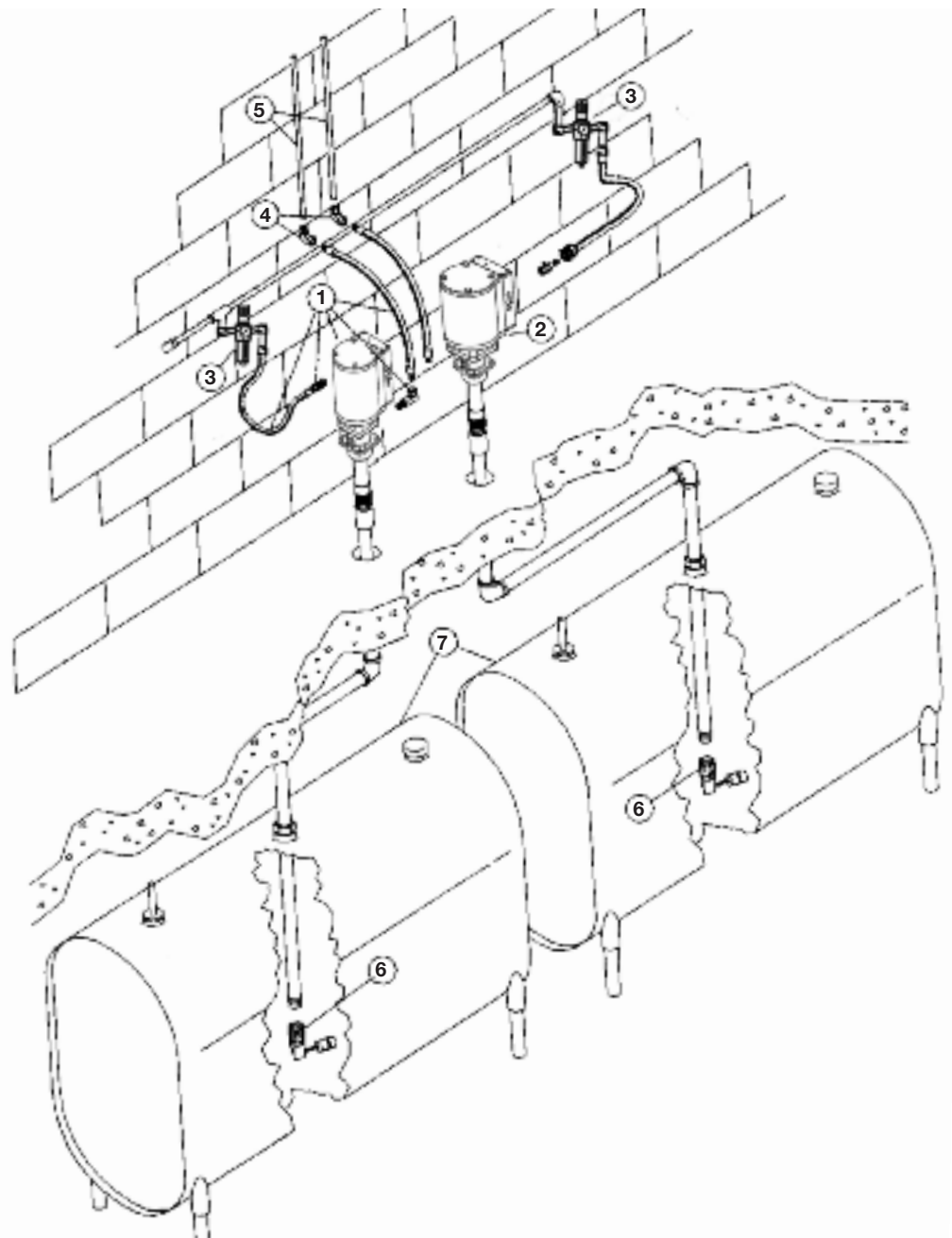
\* Requirements vary per system.

\*\* 20' length, working pressure 5000psi, 7 pack

\*\*\* Available from local petroleum equipment service distributor.

The following schematics and bills of material are of common lubrication systems. These depictions are for reference and as an aid in system design.

Variables such as length of pipe/tube run, temperature, location and other specific parameters of a system must be taken into consideration. Please refer to detailed specification information for system componentry in previous catalog pages.



Typical Installations

# Typical Installations

## Bulk Oil Systems—Motor Oil



### Single Reel System from 55-Gal. Drum

#### Bill of Materials

Model	Code	Req'd.	Description
V30500SWM	1	1	5:1 PMV Pump, Hoses, Air & Fluid Connectors, Wall Mount Bracket, Suction Kit
602136	2	1	Modular Airline Regulator and Filter w/ Gauge $\frac{3}{8}$ " NPT(f)
66084	3	1	Medium-Pressure Quarter-Turn Shut-Off Valve $\frac{1}{2}$ " NPT(f)
877	4	*	Metering Control Valve $\frac{1}{2}$ " NPT(f)
84946	5	1	Low Level Cut-Off 1" NPT
85517	6	*	Adjustable Ball Stop
85057	7	1	Heavy-Duty Hose Reel with Hose & Fluid Connectors, 50' 73600 Hose
***	8	**	$\frac{5}{8}$ " OD Union Elbow, $\frac{1}{2}$ " NPT(m)
***	9	**	$\frac{5}{8}$ " OD 90° Tube Union
***	10	**	$\frac{5}{8}$ " OD Tube Connector, $\frac{1}{2}$ " NPT(f)
***	11	**	Hi-Pressure Tubing $\frac{5}{8}$ " OD x .083 Wall (Working Pressure: 5000 psi)†

#### WARNING

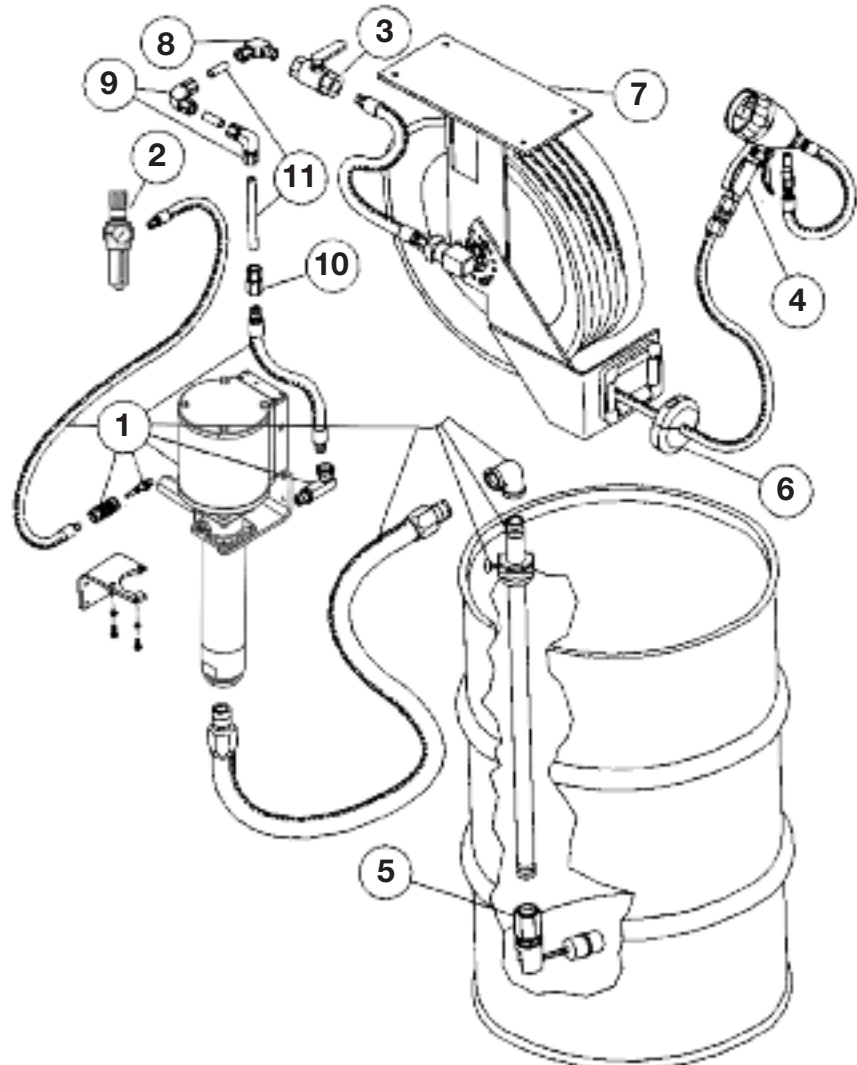
For safe and proper use, always consult instructions accompanying product. See **Safety Warning Information** for appropriate warnings.

\* Included in each reel assembly.

\*\* Requirements vary per system

\*\*\* Available from local petroleum equipment service distributor.

† 20' length, 7 pack



### Single Product to Two Reels

#### Bill of Materials

Model	Code	Req'd.	Description
V305275BB	1	1	5:1 PMV Pump, Hoses, Air & Fluid Connectors, 275 Gal. Suction Kit, Bung Bushing
602136	2	1	Modular Airline Regulator and Filter w/ Gauge $\frac{3}{8}$ " NPT(f)
66084	3	1	Medium-Pressure Quarter-Turn Shut-Off Valve $\frac{1}{2}$ " NPT(f)
877	4	*	Metering Control Valve $\frac{1}{2}$ " NPT(f)
84946	5	1	Low Level Cut-Off 1" NPT
85517	6	*	Adjustable Ball Stop
85057	7	2	Heavy-Duty Hose Reel with Hose & Fluid Connectors, 50' 73600 Hose
***	8	**	Nipple, $\frac{1}{2}$ " NPT(m) x $\frac{1}{2}$ " NPT(m)
***	9	**	$\frac{5}{8}$ " OD Union Elbow, $\frac{1}{2}$ " NPT(m)
***	10	**	$\frac{5}{8}$ " OD Tube Union Tee
***	11	**	$\frac{5}{8}$ " Union Elbow, $\frac{1}{2}$ " NPT(m)
***	12	**	$\frac{5}{8}$ " OD 90° Tube Union
***	13	**	$\frac{5}{8}$ " OD Tube Connector, $\frac{1}{2}$ " NPT(f)
***	14	**	Hi-Pressure Tubing $\frac{5}{8}$ " OD x .083 Wall (Working Pressure 5000psi)†
***	15	1	Tank

\* Included in 85057 reel assembly.

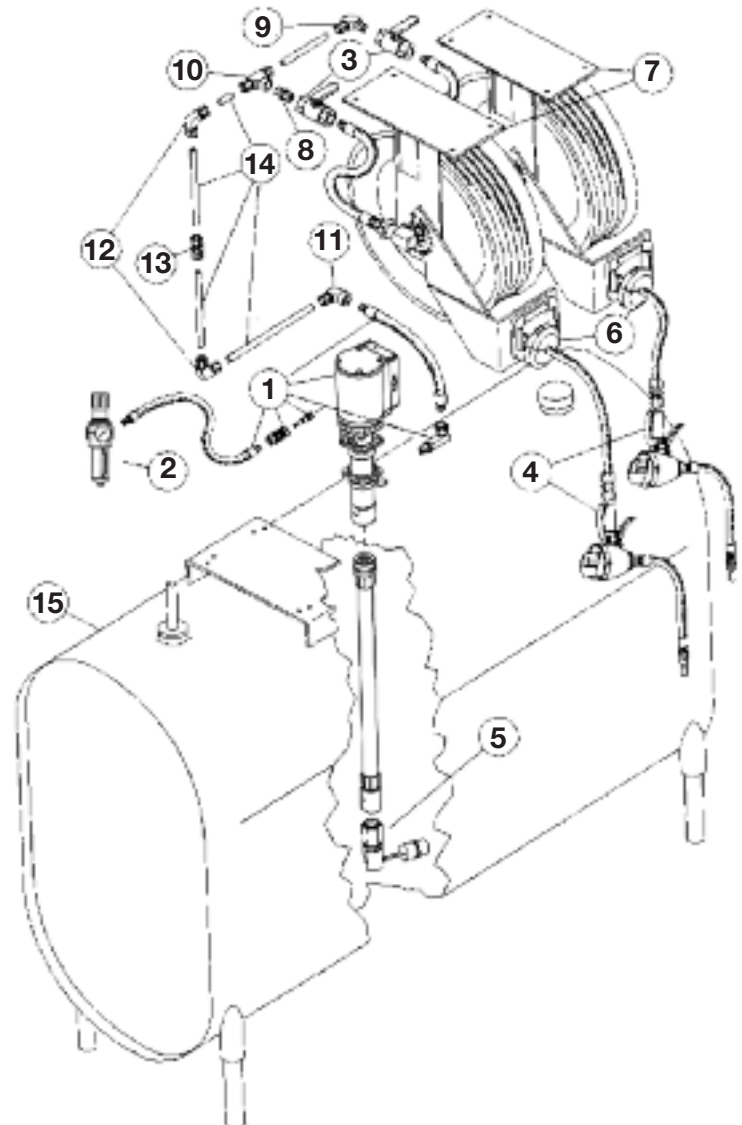
\*\* Requirements vary per system

\*\*\* Available from local petroleum equipment service distributor.

† 20' length, 7 pack

#### WARNING

For safe and proper use, always consult instructions accompanying product. See **Safety Warning Information** for appropriate warnings.



# Typical Installations

## Typical Lubrication System—Chassis Grease



### System from 120 lb. Drum

#### Bill of Materials

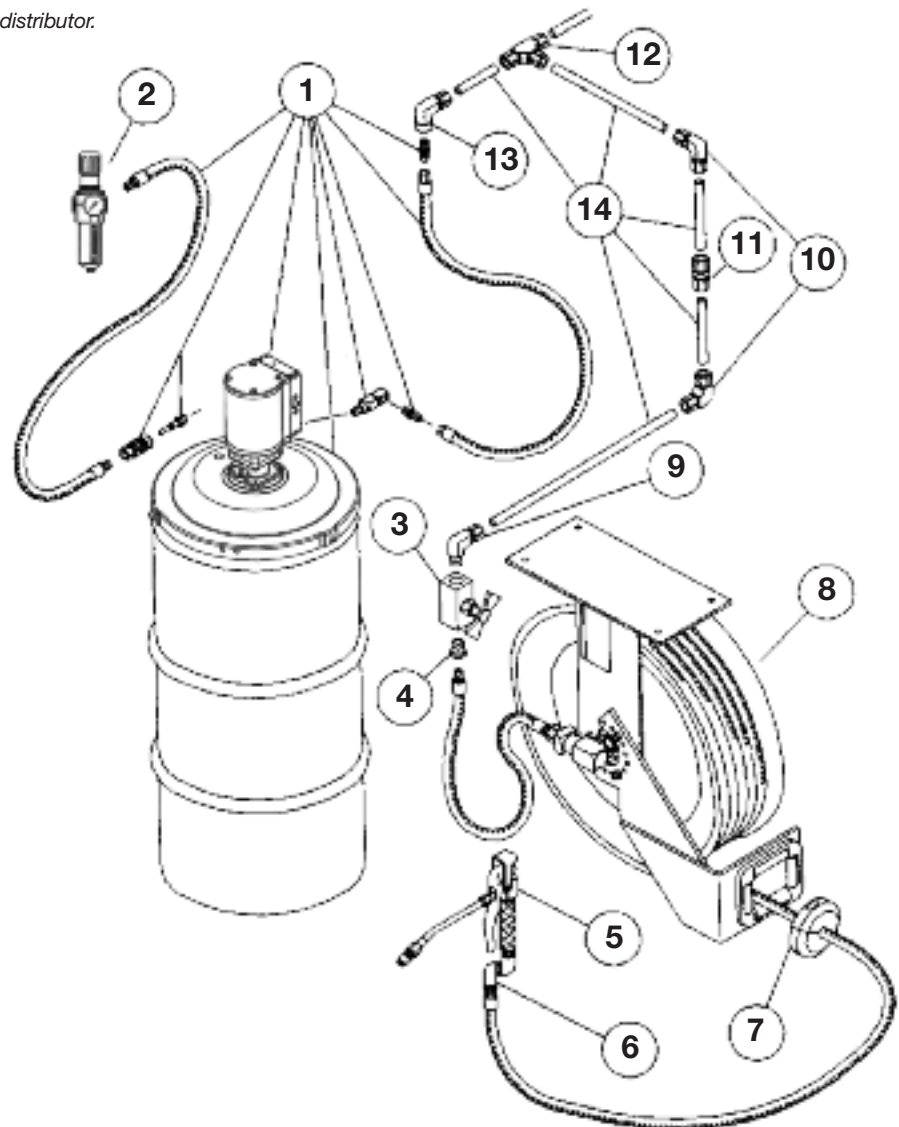
Model	Code	Req'd.	Description
V350120DC	1	1	50:1 PMV Pump, Cover, Follower, Hoses, Air & Fluid Connectors
602136	2	1	Modular Airline Regulator and Filter w/ Gauge $\frac{3}{8}$ " NPT(f)
885	3	1	Hi-Pressure Shut-Off Valve $\frac{1}{2}$ " NPT(f)
12957	4	1	Nipple, $\frac{1}{2}$ " NPT(m) x $\frac{1}{2}$ "-27 (m)
740	5	*	Hi-Pressure Control Valve $\frac{1}{4}$ " NPT(f)
81387	6	*	Hi-Pressure Universal Swivel, $\frac{1}{4}$ " NPT(m) x $\frac{1}{2}$ "-27 (m)
85516	7	*	Adjustable Ball Stop
85050	8	1	HD Hose Reel with Hose & Lube Connectors, 30' 75360 Hose
***	9	**	$\frac{5}{8}$ " OD Tube Elbow, $\frac{1}{2}$ " NPT(m)
***	10	**	$\frac{5}{8}$ " OD 90° Elbow or Union Elbow
***	11	**	$\frac{5}{8}$ " OD Tube Union
***	12	**	$\frac{5}{8}$ " OD Tube Union Tee
***	13	**	$\frac{5}{8}$ " OD Tube Elbow, $\frac{1}{4}$ " NPT(f)
***	14	**	Hi-Pressure Tubing $\frac{5}{8}$ " OD x .083 Wall (Working Pressure: 5000 psi)†

\* Included with each reel assembly.

\*\* Requirements vary per system.

\*\*\* Available from local petroleum equipment service distributor.

† 20' length, 7 pack



# Typical Installations

## Typical Lubrication System—Chassis Grease



### Two Delivery Points from 400 lb. Drum

#### Bill of Materials

Model	Code	Req'd.	Description
V350400DC	1	1	50:1 PMV Pump, Cover, Hoses, Air & Lube Connectors
602136	2	1	Modular Airline Regulator and Filter w/ Gauge $\frac{3}{8}$ " NPT(f)
885	3	2	Hi-Pressure Shut-Off Valve $\frac{1}{2}$ " NPT(f)
12957	4	2	Nipple, $\frac{1}{2}$ " NPT(m) x $\frac{1}{2}$ "-27 (m)
740	5	*	Hi-Pressure Control Valve $\frac{1}{4}$ " NPT(f)
81387	6	*	Hi-Pressure Universal Swivel, $\frac{1}{4}$ " NPT(m) x $\frac{1}{2}$ "-27 Thread (m)
85516	7	*	Adjustable Ball Stop
85050	8	1	HD Hose Reel with Hose & Lube Connectors, 30' 75360 Hose
85051	9	1	HD Hose Reel with Hose & Lube Connectors, 50' 75600 Hose
11197	10	1	Nipple, $\frac{1}{2}$ " NPT(m) x $\frac{1}{2}$ " NPT(m)
***	11	**	$\frac{5}{8}$ " OD Tube Elbow, $\frac{1}{2}$ " NPT(m)
***	12	**	$\frac{5}{8}$ " OD 90° Union Elbow
***	13	**	$\frac{5}{8}$ " OD Tube Union
***	14	**	$\frac{5}{8}$ " OD Tube Union Tee
***	15	**	$\frac{5}{8}$ " OD Tube Elbow, $\frac{1}{4}$ " NPT(f)
***	16	**	$\frac{5}{8}$ " OD Tube Union Tee, $\frac{1}{2}$ " NPT(f)
***	17	**	Hi-Pressure Tubing $\frac{5}{8}$ " OD x .083 Wall (Working Pressure: 5000 psi)†

#### WARNING

For safe and proper use, always consult instructions accompanying product. See **Safety Warning Information** for appropriate warnings.

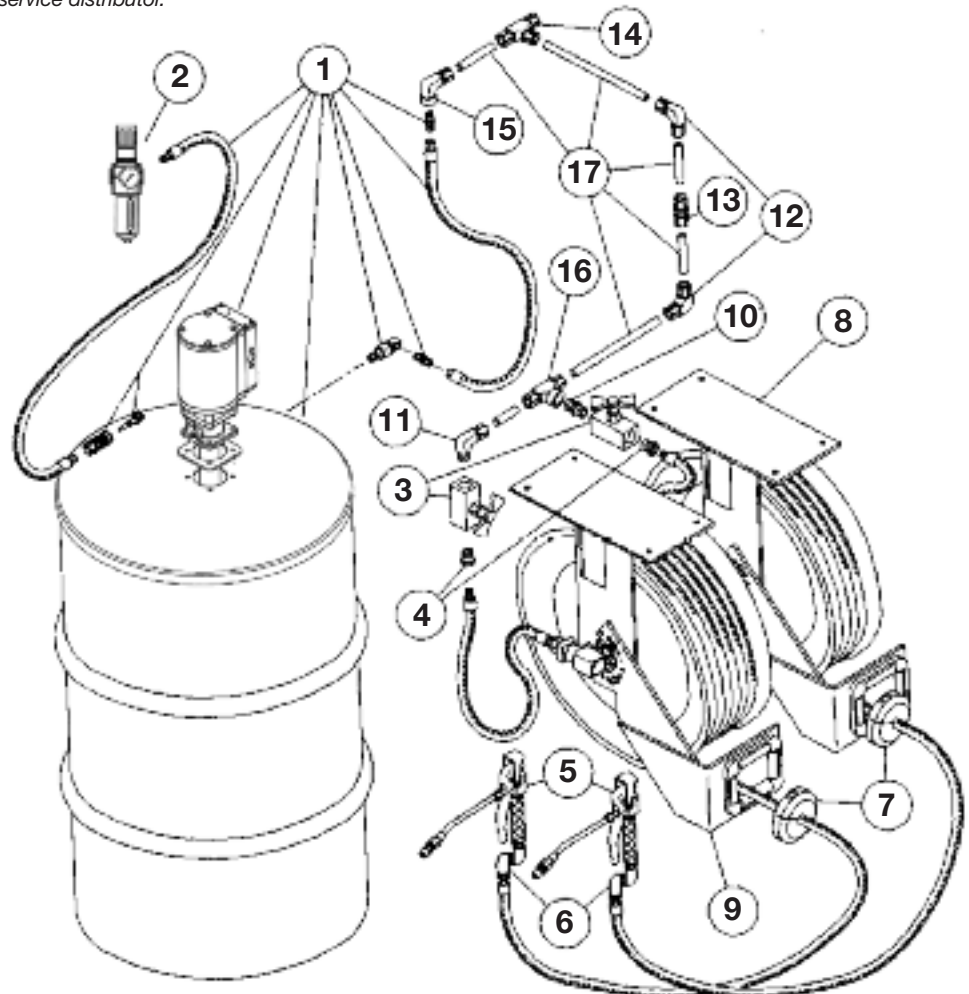
85825 Follower plate recommended for heavy greases and/or cold temperatures

\* Included in each reel assembly.

\*\* Requirements vary per system.

\*\*\* Available from local petroleum equipment service distributor.

† 20' length, 7 pack



TYPICAL INSTALLATIONS

# Typical Installations

## Pump and Reel



### Typical Installation

#### Bill of Materials—Lubricating Equipment

Model	Code	Req'd.	Description
V450400DC	1	1	PMV 50:1 Pump, Air & Grease, Hoses, Connectors
V410055BB	2	1	PMV 10:1 55 Gal. Pump, Air & Oil Hose, Connectors, Suction Tube
V40600SWM	3	1	PMV 6:1 Wall Mount Pump, Connectors, Suction Tube, Air & Oil Hoses
85636	4a		Dual Inlet 1/2" Air Operated Diaphragm Pump for 50/50 Antifreeze/Water
84817	4b	1	Wall Mount Bracket
84945	4c	1	1" Suction Kit
V305275BB	5	1	ATF Dispenser 5:1 PMV Pump, Hoses, Air & Fluid Connectors
85051	6	1	Chassis Reel
85055	7	1	Gear Lubricant Reel
85061	8	1	Motor Oil Reel
85064	9	1	Antifreeze Reel
85061	10	1	ATF Reel
85063	11	1	Air Service Reel
85242	12	6	Mounting Rail Assembly
602136	13	2	Modular Airline Regulator and Filter w/ Gauge 3/8" NPT(f)
602134	15	2	Air Regulator (with Gauge) 1/4" NPT(f)
85825	16	1	Follower Plate (Chassis 400 lb. Drum)
Others	17	2	275-Gallon Ob-round Tank

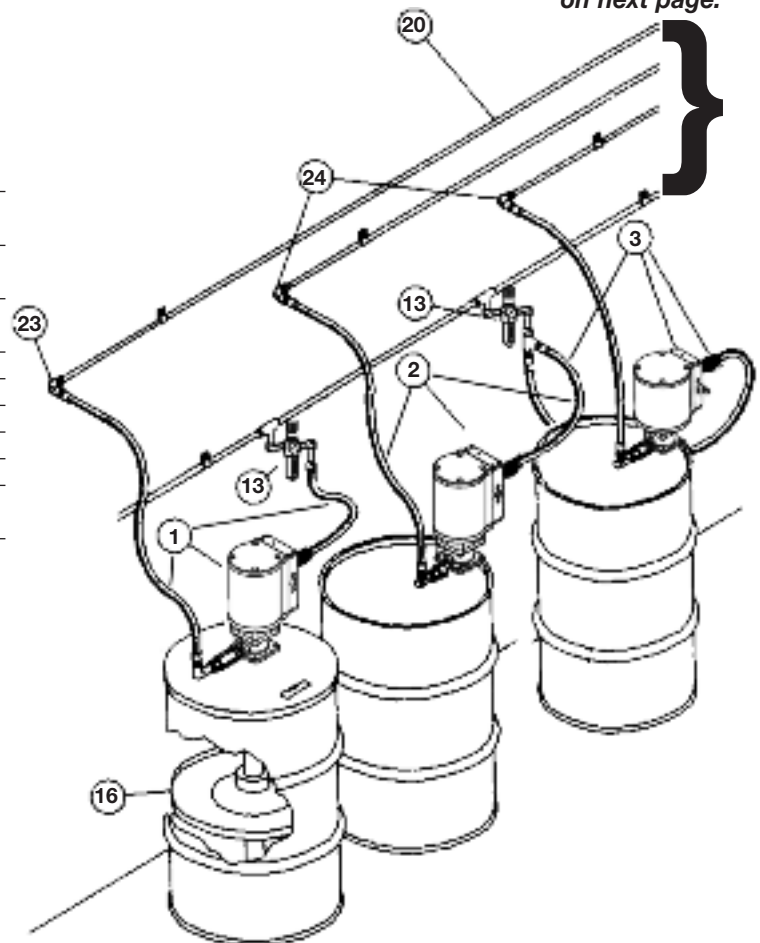
Drawing continues on next page.

### Bill of Materials—Lubricant Supply Lines

Model	Code	Req'd.	Description
***	20	*	Hi-Pressure Steel Tubing 5/8" OD x .083 Wall (20' lengths)
***	21	*	Medium-Pressure Steel Tubing 5/8" OD x .049 Wall (20' lengths)
***	22	*	Alternate for Antifreeze 15 PVC or Copper Pipe
***	23	1	5/8" OD Tube Elbow, 1/2" NPT(m)
***	24	4	5/8" OD Tube Elbow, 1/2" NPT(f)
***	25	5	5/8" OD Tube Union
***	26	5	5/8" OD Tube Union Tee, 1/2" NPT(f)
885	27	1	Hi-Pressure Shut-Off Valve 1/2" NPT(f)
66084	28	4	Medium-Pressure 1/4 Turn Shut-Off Valve 1/2" NPT(f)
12080	29	2	Bushing 1/4" NPT(f) x 1/2" NPT(m)

\* Quantities vary with installation.

\*\*\* Available from local petroleum equipment service distributor.





# Typical Installations

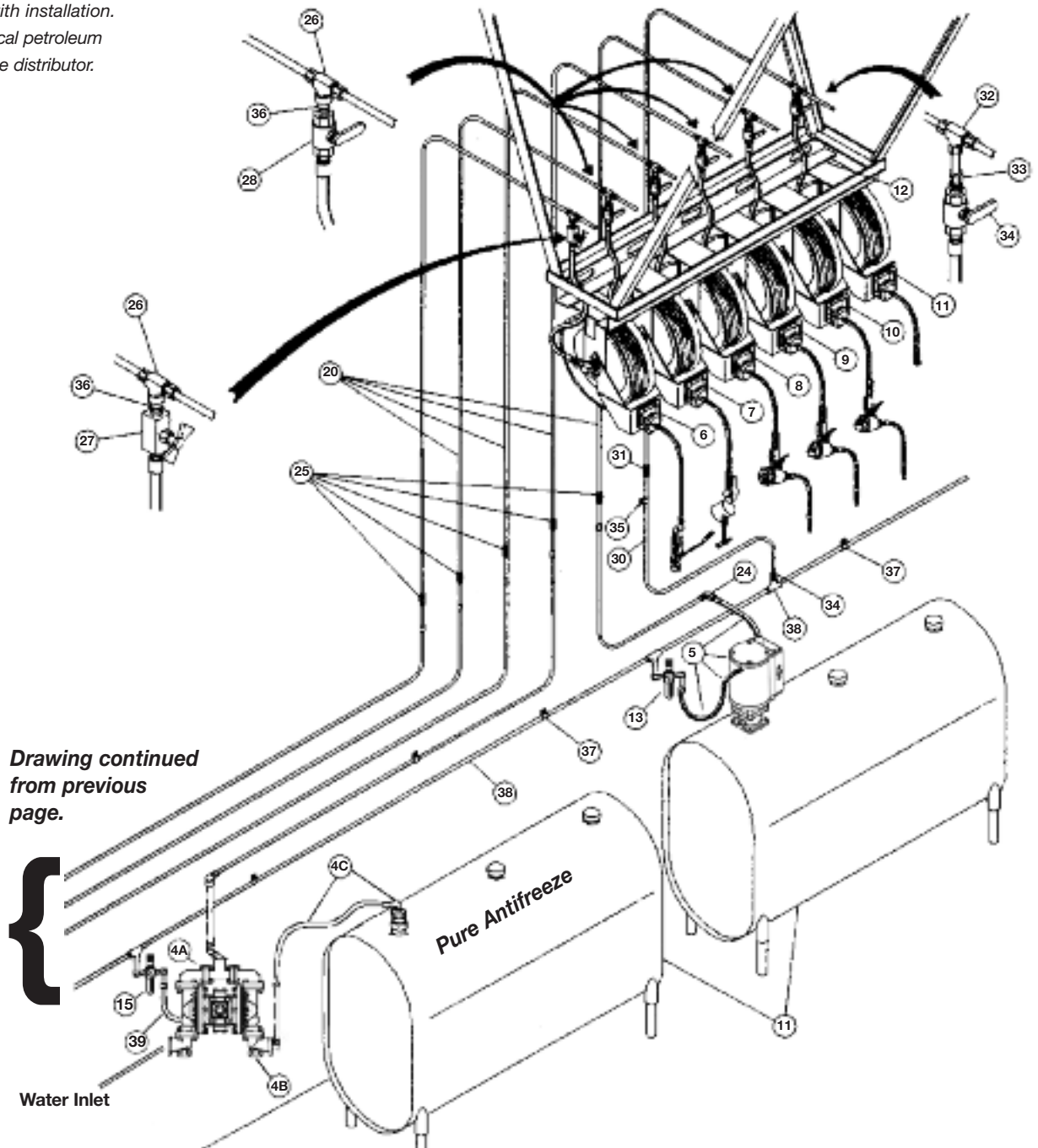
## Pump and Reel

### Bill of Materials—Air Supply Lines

Model	Code	Req'd.	Description
**	30	*	Low-Pressure Copper Tubing 3/8" OD or 1/2" OD
**	30	*	1/2" Schedule 40 Galvanized Steel Pipe
**	31	1	Union
**	32	1	Tee
**	33	2	Connector 1/2" NPT(m)
66084	34	2	Shut-Off Valve 1/2" NPT(f)
360108	35	*	Tube Clip for 1/2" OD Tubing 7/32" Diameter Hole
11197	36	5	Nipple 1/2" NPT(m) x 1/2" NPT(m)
**	37	*	Pipe Clamp for 1/2" Pipe
**	38	*	1/2" Schedule 40 ASTM A53 Buttwelded Pipe & Malleable Fittings
72060	39		1/4" ID x 1/4" NPT(m) Air Hose

\* Quantities vary with installation.

\*\* Available from local petroleum equipment service distributor.



TYPICAL INSTALLATIONS

# Typical Installations

## Typical Fast Lube Systems



### Bills Of Material

#### Lubrication Console

Model	Code	Req'd.	Description
*	1	1	Lubrication Console
967	2	2	Oil Electronic Digital Meter
967	3	1	ATF Electronic Digital Meter
846	4	2	Water Bibcock
80423	5	1	Tire Inflator w/Gauge
85515	6	3	Ball Stop
66084	7	6	Shut-off Valve
73240	8	3	1/2" x 20' Hose Assembly (HO and ATF)
72240	9	2	1/4" x 20' Hose Assembly (WW and AF)
72240	10	1	1/4" x 20' Air Hose Assembly

#### Gear Oil Control Valve

870	1	1	Pint Oil Meter
780	2	1	Control Valve
11197	3	1	Nipple
66084	5	1	Shut-off Valve
73120	6	1	Gear Oil Hose 1/2" x 10' Gear Oil Hose
90464	7	1	Swivel Assembly
67074	8	1	Street Ell 1/2" NPT

#### Chassis Control Valve

740	1	1	High-Pressure Control Valve
5861	2	1	36' Whip Hose
81974	3	1	90° Swivel
81387	4	1	Universal Swivel
778	5	1	High-Pressure Shut-off Valve
75120	6	1	10' Chassis Grease Hose

#### Rolling Drain Pan

84700	1	2	Rolling Drain Pan
241409	3	2	1" Fluid Nipple
241408	4	2	1" Fluid Coupler

\* Available from local petroleum equipment service distributor

