

Centro-Matic® Automated Lubrication Systems

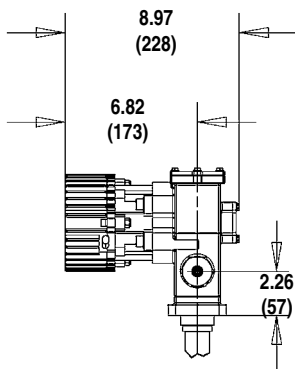
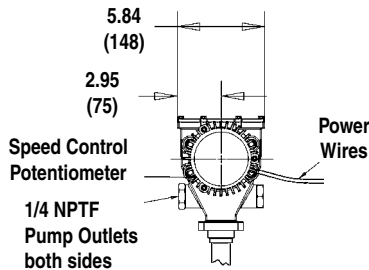
FlowMaster® Electric Pumps



It seems too good to be true, but Lincoln's new Electric FlowMaster Pump can serve all but the largest automated lubrication applications. Now you can take advantage of the ease and economy of this efficient, versatile electric pump—no cost for air associated with running the pump and no hydraulic hoses to connect.

The Electric FlowMaster Pump is a workhorse. Because you can adjust the speed of the pump's motor, you can adjust the pump's output to precisely fit any application. Lincoln offers 12 different models.

For manual lubrication, use the pump with a hose reel and a dispensing valve.



24 VDC Electric Vent Valve

274899	IP 67 Explosion Proof Rating
276325	IP 65 Rating
276903	IP 65 Rating
276919	Hardware Kit for 276903
525-32083-1	IP 54 Rating

24 VDC FlowMaster®

Operating Temperature Range:	-40° to +150°F	-40° to +65°C
Pump Outlets:	1/4" NPTF	
Motor:	1/2" HP PEAK	

Pump Only Models

Model	Capacity			Power	Maximum Pressure Rating	Speed Range RPM
	lbs	gal	L			
85479	35	5	19	24 DC	2500 psi (170 bar)	9.5-100
85552	35	5	19		5000 psi (345 bar)	5-50
85553	120	18	68			
85554	60	8	30			
85566	120	18	68			
85567	60	8	30			
85568	120	18	68			
85569	35	5	19		2500 psi (170 bar)	9.5-100
85591	400	55	208	5000 psi (345 bar)	36-360	
85582	60	8	30	12 DC	3500 psi (241 bar)	300

Model	Gear Ratio	Current Draw Amps	Output: in ³ /min	
			Min	Max
85479 *	17.8:1	2-5	0.7	6.3
85552	34:1	1-4.2	0.4	3.5
85553	34:1			
85554	19:1	1-6.5	0.7	6.3
85566	19:1			
85567	5:1	2-15	2.8	25.2
85568	5:1			
85569	17.8:1	2-5	0.7	6.3
85591				
85582		31		21

* Kit consisting of pump, follower, bucket cover and hardware

Pump and Bucket Models

Model	Capacity			Power	Maximum Pressure Rating	Speed Range RPM
	lbs	gal	L			
85471	60	8	30	24 DC	5000 psi (345 bar)	36-360
85472	90	10	38			
85473 *	120	18	68			

Model	Gear Ratio	Current Draw Amps	Output: in ³ /min	
			Min	Max
85471	5:1	2-15	2.8	25.2
85472				
85473				

Above models include follower plate and low-level detect

* Includes high-level detect

Accessories

Description	120 lb.	400 lb.
Follower plate	85492	270982
Drum cover	85474	85475
Vent valve assembly:		
24 VDC	85664	85665
Strainer	272180	272180

Centro-Matic® Automated Lubrication Systems FlowMaster® Electric Pumps



120/230 VAC FlowMaster®

Now you can save the cost of air and plug in our new 120/230 VAC FlowMaster pump. Convenient and powerful, the 120/230 VAC FlowMaster pump allows you to tap into your AC power source and pump grease from a 120 lb. or 400 lb. drum. Rely on it to drive your automated lubrication systems such as Centro-Matic®, Mod Lube®, Quicklub® and Two-line.

Operating Temperature Range:	-40° to +150°F (-40° to +65°C)
Operating Voltage:	120/230 VAC (50/60 Hz single phase)
Pump Outlets:	¼" NPTF
Motor:	½" HP

Pump Only Models

Model	Capacity			Power	Maximum Pressure Rating	Speed Range RPM
	lbs	gal	L			
85598	400	55	208	120-230 AC	5000 psi (345 bar)	9 - 93
85599	120	18	68			

Model	Gear Ratio	Current Draw: Amps		Output: in ³ /min	
		@120 V	@230 V	Min	Max
85598	19:1	1-4.6	.5-2.4	0.7	6.3
85599					

Accessories

Description	120 lb.	400 lb.
Follower plate	85492	270982
Drum cover	85474	85475
Vent valve assembly: 120 VAC	85662	85663
230 VAC	85660	85661
Strainer	272180	272180

Reel-N-Flow Pump and Reel Kits



Operating Temperature	-20° to +140°F (-29° to +60°C)
Operating Voltage:	24 VDC (18 min., 30 max.)
Motor	1/3 HP (0.25 kw)
Max. Current Draw	15 AMPS
Max. Output	18.0 in ³ /min (295 cm ³ /min)
Max. Output Pressure	6,000 psi (413.8 bar)
Pump Weight	35 lbs. kg (15.9)
Hose Reel Capacity	3/8" High Pressure Hose, 50 ft. (15 m)

Mounts on 35#/5-gallon refinery container

Pump Models

Model	Description
274873	24V, Bare, high-pressure pump
274874	24V, Bare pump with integrated pressure switch and manifold
276041	12V, Bare high-pressure pump
276360	12V, Bare pump with integrated pressure switch and manifold

Accessories

Description	Model
10,000 psi Gauge	274872
35#/5-gal. Container Mount	274934

Kit Models

Model	Description	Bare Pump	Lid	Follower	Reel	Connecting Hose	Control Vlv. & Swivel
274886	274874 pump, lid and follower	274874	274878	274888			
274887	274886 with hose reel, 50' hose, control valve, swivel & 7' connecting hose	274874	274878	274888	94553H	276366	3050, 81729
276358	276360 pump, lid and follower	276360	274878	274888			
276359	276358 with hose reel, 50' hose, control valve, swivel & 7' connecting hose	276358	275878	274888	94553H	276366	3050, 81729

50Hz 380/420V 3 Phase AC FlowMaster Pump

The high-performance FlowMaster product line is a new generation of pump technology. Compact and versatile, its unique rotary drive and modular gear set let you adjust the pump to exactly fit your application.



- Wires directly to existing AC service
- Reduces installation costs – no need to tap into hydraulic circuits or pipe in compressed air
- Integrates easily to many styles of lubrication systems
- Heavy industry
 - Mining
 - Steel
 - Paper
- General Industry
 - Food/beverage
 - Automotive
 - Packaging
 - And others

Pump Model:	85850	85851
Pump/Container Size:	120 lb.	400 lb.
Pump Output:	400 cm ³ /min. (24.5 in ³ /min.)	
Operating Temperature:	-40° to 65°C (-40° to 150°F)	
Motor Max. Temperature:	Up to 105°C (220°F)	
Operating Voltage:	380/420 Volts 3 Phase	
Motor Power:	1/2 Hp	
Pump Outlet:	1/4" NPTF	

Accessories

Description	120 lb.	400 lb.
Follower plate	85492	270982
Drum cover	85474	85474
Vent valve assembly	85660	85661
Strainer	272180	272180