

1.0 Base and Bulk Containers

Bulk container installations for newspaper printing plants and large heatset printing plants

Stationary ink tanks for supplying ink to large printing presses, e.g. heatset or coldset newspaper presses, are standard today.

A distinction is made here between base containers up to 3000 kg and stationary bulk containers from 5000 kg content capacity

Stationary tanks are in part being used also to supply the colour inks, of which the consumption is increasing continually. The advantage of these stationary tank installations is that the operator comes into contact with ink only in the tank room and later on at the press, or ink fountain respectively.

The ink is delivered by the producer on the one hand in a tank vehicle via an infeed station (mainly newspaper printing) and on the other hand via 1000 kg interchangeable containers for base containers.

Both systems offer high levels of comfort and are monitored via a complete control system. Data can be transmitted to the ink producer via a network and the Internet for purposes of ink consumption monitoring and automatic re-ordering.

All these installations are custom-designed and built. No installations are identical.

1.0 Base containers

Model	Content	Dimensions L x W x H	Part number
LBC 800	800 kg blue	1500 x 1250 x 1200 mm	295-10220-8
LBC 800	800 kg yellow	1500 x 1250 x 1200 mm	295-10220-9
LBC 800	800 kg red	1500 x 1250 x 1200 mm	295-10261-1
LBC 800	800 kg black	1500 x 1250 x 1200 mm	295-10261-2
LBC 1500	1500 kg blue	1800 x 1250 x 1450 mm	295-10261-5
LBC 1500	1500 kg yellow	1800 x 1250 x 1450 mm	295-10261-3
LBC 1500	1500 kg red	1800 x 1250 x 1450 mm	295-10261-4
LBC 1500	1500 kg black	1800 x 1250 x 1450 mm	295-10220-1
LBC 3000	3000 kg blue	1800 x 1500 x 1800 mm	295-10261-8
LBC 3000	3000 kg yellow	1800 x 1500 x 1800 mm	295-10261-6
LBC 3000	3000 kg red	1800 x 1500 x 1800 mm	295-10261-7
LBC 3000	3000 kg black	1800 x 1500 x 1800 mm	295-10220-3
LBC	Special size	On request	



Base containers

1.0 Bulk containers

Model	Content	Dimensions L x W x H	Part number
LGC 7000	7000 kg blue	1700 x 1475 x 3600 mm	295-10315-9
LGC 7000	7000 kg yellow	1700 x 1475 x 3600 mm	295-10315-7
LGC 7000	7000 kg red	1700 x 1475 x 3600 mm	295-10315-8
LGC 7000	7000 kg black	1700 x 1475 x 3600 mm	295-10504-5
LGC 10000	10000 kg blue	1700 x 2000 x 3600 mm	295-10504-6
LGC 10000	10000 kg yellow	1700 x 2000 x 3600 mm	295-10504-7
LGC 10000	10000 kg red	1700 x 2000 x 3600 mm	295-10504-8
LGC 10000	10000 kg black	1700 x 2000 x 3600 mm	295-10344-1
LGC 8000R	8000 kg blue	Ø 1800 mm, H = 4350 mm	295-10344-5
LGC 8000R	8000 kg yellow	Ø 1800 mm, H = 4350 mm	295-10344-3
LGC 8000R	8000 kg red	Ø 1800 mm, H = 4350 mm	295-10344-4
LGC 8000R	8000 kg black	Ø 1800 mm, H = 4350 mm	295-10344-2
LGC 10000R	10000 kg blue	Ø 2000 mm, H = 4350 mm	295-10504-1
LGC 10000R	10000 kg yellow	Ø 2000 mm, H = 4350 mm	295-10504-2
LGC 10000R	10000 kg red	Ø 2000 mm, H = 4350 mm	295-10344-9
LGC 10000R	10000 kg black	Ø 2000 mm, H = 4350 mm	295-10504-3
LGC	Special size	On request	



Bulk containers

Container accessories

1.1 Connection container to pump

Model	Type	Description	Part number
DN 80 M	Manual	Ball valve MS G3" internal thread DN 75 PN25	235-10353-4
DN 100 M	Manual	Ball valve MS G4" internal thread DN 100 PN25	235-10664-6
DN 80 MF	Manual flange	Ball valve ST flange DN 80 PN16	235-16166-8
DN 100 MF	Manual flange	Ball valve ST flange DN 100 PN16	235-10664-7
DN 80 MFE	Manual flange Limit switch	Ball valve ST DN 80 PN16 with limit monitoring	235-13197-9
DN 100 MFE	Manual flange Limit switch	Ball valve ST DN 100 PN16 with limit monitoring	235-10664-8
DN 80 AFE	Autom. flange Limit switch	Ball valve ST DN 80 PN16 with actuator and limit monitoring	235-10353-1
DN 100 AFE	Autom. flange Limit switch	Ball valve ST DN 100 PN16 with actuator and limit monitoring	235-10664-9
ERV 80	NBR yellow	Compensator, elast. flange DN 80 yellow	295-10355-7
ERV 100	NBR yellow	Compensator, elast. flange DN 100 yellow	295-10355-5
3ZPUMM	PUR 356	Tank hose DN 75 x 1000 3" nut connecting thread both sides	225-10231-7
4ZPUMM	PUR 356	Tank hose DN 100 x 1000 4" nut connecting thread both sides	on request
3ZPRMM	UPE for eco-inks or similar	Tank hose DN 75 x 1000 3" nut connecting thread both sides	295-10736-1
4ZPRMM	UPE for eco-inks or similar	Tank hose DN 100 x 1000 4" nut connecting thread both sides	On request

1.2 Emptying container directly – special outflow for emptying the container

Model	Type	Description	Part number
DN 80 M	Manual	Ball valve MS G3" internal thread DN 75 PN25	235-10353-4
DN 80 MF	Manual flange	Ball valve ST flange DN 80 PN16	235-13166-8
DN 80 MFE	Manual flange Limit switch	Ball valve ST DN 80 PN16 with limit monitoring	235-13197-9
DN 80 AFE	Autom. flange Limit switch	Ball valve ST DN 80 PN16 with actuator and limit monitoring	235-10353-1
CV3I	Male adapter	Camlock male adapter MS 75 G 3" internal thread	233-10457-6
CV3A	Male adapter	Camlock male adapter MS 75 G 3" outer thread	233-10457-5
TWV3I	Male adapter	TW male adapter MS MK80 G 3" internal thread	242-14132-8
TWV3A	Male adapter	TW male adapter MS MK80 G 3" outer thread	233-10457-7
TWS	Male adapter	Plug, TW lock MS MK 80	233-10457-3
CS	Male adapter	Plug, Camlock lock MS DC 75	233-10457-4
CK	Female adapter	Cap, Camlock lock MS DC 75	233-10457-1
TWK	Female adapter	Cap, TW lock MS MK 80	233-10457-2
3ZPUCM	PUR 356	Hose, PUR 356 DN 75 x 1000 Camlock D.75/3" nut connecting thread	225-10231-3
3ZPUTM	PUR 356	Hose PUR 356 DN 75 x 1000 tank vehicle 75/3" nut connecting thread	225-10231-4

1.3 Test connection container/back up

1.3.1 Base container system

Model	Type	Description	Part number
DN 80 M	Manual	Ball valve MS G3" internal thread DN 75 PN25	235-10353-4
DN 80 MF	Manual flange	Ball valve ST flange DN 80 PN16	235-13166-8
DN 80 MFE	Manual flange Limit switch	Ball valve ST DN 80 PN16 with limit monitoring	235-13197-9
DN 80 AFE	Autom. flange Limit switch	Ball valve ST DN 80 PN16 with actuator and limit monitoring	235-10353-1
3ZPUCM	PUR 356	Hose, PUR 356 DN 75 x 1000 camlock D.75/3" nut connection thread	225-10231-3
3ZPUTM	PUR 356	Hose, PUR 356 DN 75 x 1000 tank vehicle 75/3" nut connection thread	225-10231-4
BUAC1500	Manual for LBC 1500	Connection kit, back up container 1500 kg	595-33171-1
BUAC3000	Manual for LBC 3000	Connection kit, back up container 3000 kg	595-33172-1

1.3.2 Bulk container system

Model	Type	Description	Part number
DN 80 M	Manual	Ball valve MS G3" internal thread DN 75 PN25	235-10353-4
DN 80 MF	Manual flange	Ball valve ST flange DN 80 PN16	235-13166-8
DN 80 MFE	Manual flange Limit switch	Ball valve ST DN 80 PN16 with limit monitoring	235-13197-9
DN 80 AFE	Autom. flange Limit switch	Ball valve ST DN 80 PN16 with actuator and limit monitoring	235-10353-1
3ZPUCM	PUR 356	Hose, PUR 356 DN 75 x 1000 camlock D.75/3" nut connection thread	225-10231-3
3ZPUTM	PUR 356	Hose, PUR 356 DN 75 x 1000 tank vehicle 75/3" nut connection thread	225-10231-4
3ZPUTM	PUR 356	Hose, PUR 356 DN 75 x 1500 tank vehicle 75/3" nut connection thread	225-10231-8

1.4 Circulation

1.4.1 Installation for base containers

Model	Type	Description	Part number
		On request	

1.4.2 Installation for bulk containers

Model	Type	Description	Part number
DN 80 M	Manual	Ball valve MS G3" internal thread DN 75 PN25	235-10353-4
DN 80 MF	Manual flange	Ball valve ST flange DN 80 PN16	235-13166-8
DN 80 MFE	Manual flange Limit switch	Ball valve ST DN 80 PN16 with limit monitoring	235-13197-9
DN 80 AFE	Autom. flange Limit switch	Ball valve ST DN 80 PN16 with actuator and limit monitoring	235-10353-1
ERV 80	NBR yellow	Compensator, elast. flange DN 80 yellow	295-10355-7
3ZPUMM	PUR 356	Hose, PUR 356 DN 75 x 1000 3" nut connecting thread both sides	225-10231-7
UWP90	90 l / min	Gear pump, BT 7 BZ OBK 51+ baseplate + reducer	244-10135-8



Circulation



Circulation

1.5.1 Base container systems

Model	Type	Description	Part number
		Weigh system for ink container up to 15 t	On request
DMU	Pressure measurement	Measuring transmitter HDA 4306-A-4A-4-20	295-10737-1
SS30	2 outputs UC2000-30GM 2 SA	Ultrasonic-Sensor 80 – 2000 mm	237-10266-8



1.5.2 Bulk container systems

Model	Type	Description	Part number
WS15.3	3 weighing sensors	Weigh system for ink containers up to 15 t	595-32652-1
		Weigh system for ink containers up to 30 t	On request
WS15.1	1 weighing sensor	Weigh system for ink containers up to 15 t	595-33140-1
		Weigh system for ink containers up to 30 t	On request
DMU	Pressure measure	Pressure transmitter HDA 4306-A-4A-4-2	295-10737-1



Ink level measuring system

1.6 Filling pipe bulk containers

Model	Type	Description	Part number
RSKL80	Brass	Check valve DN 80 PN 16 L = 50	295-10355-3
RSKL100	Brass	Check valve DN 100 PN 16 L = 50	295-10355-4
DN 80 MF	Manual flange	Ball valve ST flange DN 80 PN16	235-13166-8
DN 100 MF	Manual flange	Ball valve ST flange DN 100 PN16	235-10664-7
DN 80 MFE	Manual flange Limit switch	Ball valve ST DN 80 PN16 with limit monitoring	235-13197-9
DN 100 MFE	Manual flange Limit switch	Ball valve ST DN 100 PN16 with limit monitoring	235-10664-8
DN 80 AFE	Autom. flange Limit switch	Ball valve ST DN 80 PN16 with actuator and limit monitoring	235-10353-1
DN 100 AFE	Autom. flange Limit switch	Ball valve ST DN 100 PN16 with actuator and limit monitoring	235-10664-9



Filling pipe bulk containers



Filling pipe bulk containers



Filling pipe bulk containers

1.7 Docking station bulk container systems

Model	Type	Description	Part number
		Housing with sliding door	On request
TTK80	Male adapter codable	Todo dry coupling 3" male adapter	233-10457-8
DN 80 MF	Manual flange	Ball valve ST flange DN 80 PN16	235-13166-8
DN 100 MF	Manual flange	Ball valve ST flange DN 100 PN16	235-10664-7
DN 80 MFE	Manual flange Limit switch	Ball valve ST DN 80 PN16 with final position monitoring	235-13197-9
DN 100 MFE	Manual flange Limit switch	Ball valve ST DN 100 PN16 with final position monitoring	235-10664-8
DN 80 AFE	Autom. flange Limit switch	Ball valve ST DN 80 PN16 with actuator and final position monitoring	235-10353-1
DN 100 AFE	Autom. flange Limit switch	Ball valve ST DN 100 PN16 with actuator and final position monitoring	235-10664-9
SBL	Optical/ acoustic	Signal horn with flashing light 24 V DC	236-14280-3



Docking station



Filling filter for bulk container system

1.8 Filling filter for bulk container systems

Model	Type	Description	Part number
LLF80/1000	Strainer basket/ flange	In-line filter 10DLW G1000 DN 80	235-10338-4
LLF80/1000	Strainer basket/ flange	In-line filter 10DLW G1000 DN 100	On request



Filling filter for bulk container system

1.9 Heating systems

Model	Type	Description	Part number
LHS16W	Heating main pipe	Strip heater with control box 16 W 230 V	237-10184-5
LHS21W	Heating filling and suction pipe	Strip heater with control box 21 W 230 V	237-10184-6
LHS1000W	Heating container	Strip heater with control box 1000 W 230 V	237-10184-9



1.10 Overflow prevention bulk containers

Model	Type	Description	Part number
ÜFS	Oscillating fork WHG approved (WHG = German Water Resources Law)	Level switch 10-34 V DC 250 mA	234-10195-4



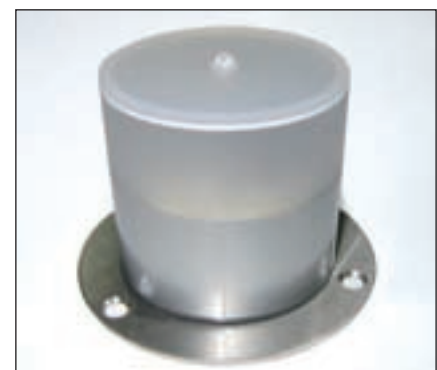
Heating system



Heating strip

1.11 Level display

Model	Type	Description	Part number
SL	3-colour	Signal lamp 3-colour 24 V DC	295-10737-2



Level display

Complete Pump Range for all Applications

Lincoln has decades of experience in the design and manufacture of pump systems for highly viscous media, e.g. offset inks. Lincoln pump systems have been used in the market with outstanding success for more than 30 years. Now they have been further enhanced especially for offset inks. They offer both robustness and reliability as well as simple maintenance and servicing. Based on this experience, Lincoln has developed a revised range of pumps.

A distinction is made between:

- Pumps with hoist for 200 kg or 300 kg interchangeable drums
- Pumps for ink containers complete with pump foot stand
- Hydraulic ink pumps with foot stand + hydraulic aggregate for containers
- UV ink pumps for interchangeable and stationary containers

The performance of an ink pump is not dependent on the amount of ink transported per double stroke, but rather on the actual amount of ink supplied in a defined period of time. This is determined by the number of presses, their consumptions and levels of utilisation.

Features of the new ink pumps:

- Attractive modern design
- Robust construction
- Durable and reliable
- Simple maintenance and handling due to metric system
- Special sealing material to match the application concerned
- Pumps can be driven directly with 220 V
- Stroke frequency monitoring with possible simultaneous feed rate calculation
- Worldwide network of replacement parts dealers



*Lincoln
container pump
LIP 6CO/400*



*Lincoln
rectangular
container pump
LIP 6RC/400*



*Lincoln
drum pump
LIP 6FA/400*

Lincoln ink pumps, proven in thousands of applications at printing operations worldwide.