

SOLUTIONS

JULY 1999

VOL. 1, NO. 2

**A New Addition To Our Line of Powerful
Quicklub® Lubrication Systems**

QLS 301

Compact and Rugged • Easy to Install and Use • Multiple Standard Features

In This Issue:

New
QLS 301 *pg. 2*

Quickline™
& Zerk-Lock™
connectors *pg. 6*

Quicklub®
product range *pg. 7*

New Products:
Centro-Matic®
Integrated Pump
ORSCO Series 150
FlowMaster™ *pg. 8*



THREE components
IN a compact package
ONE convenient solution

NEW

Quickclub QLS 301

Maximum Performance & Great Value

The newest automated Quickclub Lubrication System—the QLS 301—has it all. It's compact, rugged, easy to install and easy to use. It has a long list of standard features and delivers maximum performance—all at an affordable price. For those who thought the reduced downtime and improved safety benefits of automated lubrication were out of reach, and for those waiting for a cost-effective system for their smaller machinery, the reliable QLS 301 is the answer. It's automated lubrication "made easy."



The compact, three-in-one QLS 301 comes with everything, installs almost anywhere.



The QLS 301 can withstand high-pressure washdowns, vibration, cold and heat.

Complete and ready to go "out of the box," the fully automatic QLS 301 can supply up to 18 lubrication points with NLGI #2 grease. QLS 301 is also capable of lubricating more points which require low volumes of lubricant. With a built-in safety valve, overfill protection, blocked line detection capability and much more, the QLS 301 is a great value anyone can afford.

It's Compact

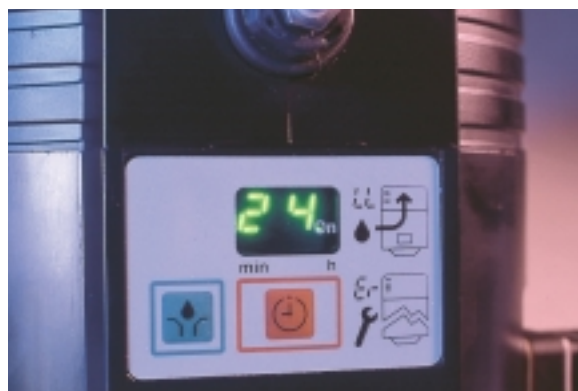
The QLS 301 is three components pre-assembled in one package—pump, control/monitor unit, and metering valve. Its compact size (it's only 8.5 x 9 x 10.5 inches) makes it possible to install the unit in places that were unthinkable before. Unlike competitors' systems, vertical mounting is not required. Models come with the metering valve (SSV divider block) attached on the back or the bottom, further increasing mounting possibilities.

It's Rugged

The QLS 301 "package" may be small, but its performance is powerful. It can handle temperatures between -25°C and +70°C (-10°F to +160°F) and stands up to high-pressure washdowns because it's earned NEMA 4 (USA) and IP6K9K (Europe) protection ratings. Back-mounted models have been vibration-tested to the strictest specifications of the mobile equipment industry (models were tested for 100 hours at a random frequency between 10 and 500 Hz and a total acceleration of 5 g).

It's Easy to Use

The beauty of the QLS 301 is how easy it is to use. The system's integrated circuit board controls lubrication cycle times and monitors the system's function



It's fully automated, with a keypad and LED display for easy checking.



The installation kit has everything needed, including tubing along with Zerk-Lock and Quickline connectors in inches or millimeters.

to ensure complete lubrication cycles. The standard low-level control helps ensure that the pump never goes empty. And with an easy-to-use keypad and LED display, QLS 301 settings and messages are always at your fingertips. You can quickly check settings, find out where the system is in a lube cycle, or even manually trigger a cycle when necessary.

It's Easy to Install

Unlike other lubrication systems, the QLS 301 comes pre-assembled so installation is quick and easy. Also for once, an installation kit has everything you need, including flexible nylon tubing and quick connecting Zerk-Lock and Quickline fittings in inches or millimeters.

Installation is this simple: Fasten the unit to your machinery, connect the flexible tubing, plug the unit into an electrical outlet, set the time interval, fill the reservoir . . . and it's ready to lubricate.

It's Environmentally Friendly

Tired of the housekeeping and environmental problems when overpressurized systems dump lubricant on the floor? The QLS 301's newly developed internal pressure relief valve solves the problem and prevents waste by directing lubricant back to the reservoir. Versions with the back-mounted metering valve have another advantage over other progressive lube systems—an internal lubricant feedback line. When unused lubricant outlets are plugged, lubricant is saved because it's automatically diverted back to the reservoir. This also allows for more precise lubrication. On bottom-mounted versions, external feedback lines can be installed to save lubricant.

Features & Benefits

- ◆ Complete, compact system ready to use "out of the box" that installs quickly
- ◆ Built-in controller with LED display and keypad for easy programming, system cycling, low-level monitoring and troubleshooting
- ◆ Low-level control is built in to ensure the unit won't run out of lubricant
- ◆ Complete installation kit includes tubing, along with Zerk-Lock™ and Quickline™ fittings in inches or millimeters
- ◆ Expansion capability allows use in systems with more than 18 points that have lower lubricant requirements



The standard low-level control ensures lubricant won't run out.



You can pre-fill tube lines or override the system manually with the manual lubrication fitting.

QLS 301

Works for Many Industries

The QLS 301 comes with the metering valve mounted on the bottom or back to handle the majority of applications in the mobile and industrial markets, including:

On-road Vehicles	Construction	Mining
Automotive	Agriculture	Food & Beverage
Paper	Steel	Chemical
Power Stations	Ports & Harbors	Plastic Processing
Textile	General Industry	

Back-mounted versions, which are tested for shock and vibration and used with plastic tubing and quick connectors, are preferred for mobile equipment. Bottom-mounted versions are good for all industrial applications. These versions are the choice when steel or copper tubing with compression or bite-type fittings and connectors are used because the bottom-mounted valve is more accessible for tools.



QLS 301 does the job for smaller excavators and other mobile equipment in mining and construction.



The QLS 301 back-mount version is the choice for trucks and trailers (Class 7 & 8).



Total installation and start-up time for this 10-lubrication point palletizer using NLGI #2 grease was only four hours. The satisfied customer ordered two QLS 301 systems long before the product's release.



The shock and vibration of a bending and shear machine was no problem for the QLS 301 in field tests. Installation took only three hours.



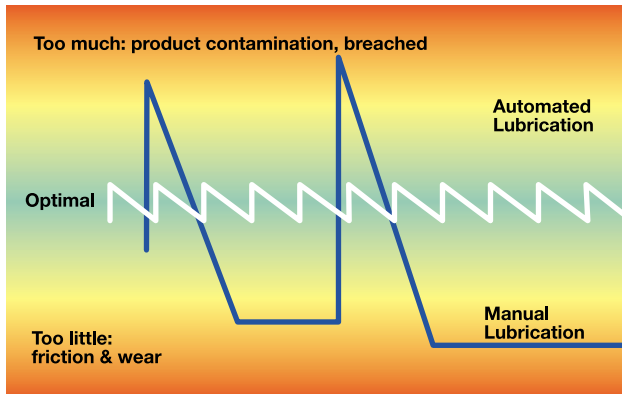
In high-temperature applications, such as dryers or ovens, the QLS 301 bottom-mount version works well with copper or steel tubing.



The QLS 301 is perfect for refrigeration and other types of trailers with a constant power supply.

Automated Lubrication Offers Many Benefits

AUTOMATED VS. MANUAL LUBRICATION



- ◆ Increased profits and productivity
- ◆ Lower costs for repairs, spare parts and lubricant
- ◆ Improved operating times; less costly downtime
- ◆ Longer maintenance intervals
- ◆ Dramatic reduction in lubrication-related bearing failures
- ◆ Significant contributions to safety and the environment
- ◆ Frees maintenance workers for more productive activities

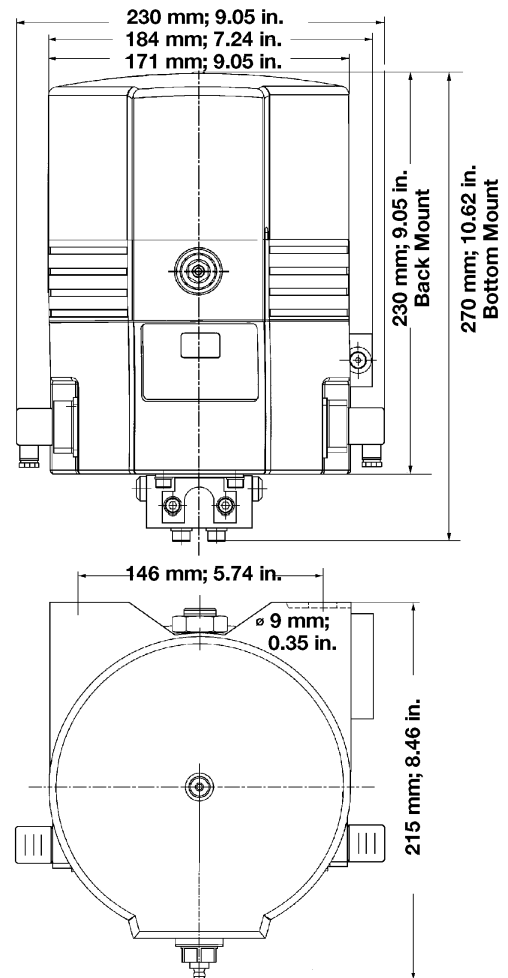
QLS 301 System Specifications

Operating voltage	12 and 24 VDC	
	120 and 230 VAC; 50/60 Hz	
Operating current	12 VDC	2.0 A
	24 VDC	1.0 A
	120 VAC	1.0 A
	230 VAC	0.5 A
Operating temperature	-10° to 160°F	-25° to 70°C
Number of outlets	6, 8, 12 or 18	
Reservoir capacity	61 in ³	1.0 L
Protection	NEMA 4	IP6K9K
Lubrication cycle time	20 min. to 100 hours	
Number of cycles	1 (with 6, 8 divider block, 1, 2 or 3 cycles are possible)	
Timer memory	Indefinite	
Max. operating pressure	3000 psig	205 bar
Output per outlet & cycle	approx. 0.012 in ³	0.2 cm ³
Lubricant	up to NLGI 2 grease	
Weight	12.5 lbs.	5.7 kg

QLS 301 Available Models

Model	Valve Type	Valve Mount	Volt	Power Cable
P301 31211151	SSV6	Back	12DC	30' / 10m
P301 61211151	SSV12	Back	12DC	30' / 10m
P301 91211151	SSV18	Back	12DC	30' / 10m
P301 31411151	SSV6	Back	24DC	30' / 10m
P301 61411151	SSV12	Back	24DC	30' / 10m
P301 91411151	SSV18	Back	24DC	30' / 10m
P301 42611111	SSV8	Bottom	120AC	none
P301 62611111	SSV12	Bottom	120AC	none
P301 92611111	SSV18	Bottom	120AC	none
P301 42811111	SSV8	Bottom	230AC	none
P301 62811111	SSV12	Bottom	230AC	none
P301 92811111	SSV18	Bottom	230AC	none

All models come with a low-level indicator and remote contacts.



Inch Accessory Size Kits

SSV 6/8 part number 550-36971-1

SSV 12 part number 550-36971-2

SSV 18 part number 550-36971-3

Ask for availability and delivery of metric size kits.

Zerk-Lock & Quickline

Make Connecting Fast



252751



252752



252753



252754



252755



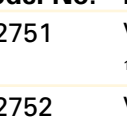
252756



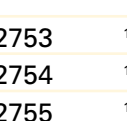
252757



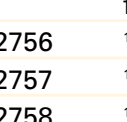
252758



252759



252760



252761

Installing lubrication systems can take a lot of time, especially when there's not much space to work with. Those problems are a thing of the past with Lincoln Industrial's unique Zerk-Lock and Quickline connectors and adapters. Great for hard-to-reach places and those spots where there's no room for a wrench, Zerk-Lock and Quickline cut the time it takes to install line connections in half—or more—when compared to screw-type connectors.

Quickline line connectors and adapters link metering valves and flexible lubrication lines. Outlet adapters with check valves are used in automated systems, while models without a check valve are used in manual systems—called single point kits—where a divider valve connected to several lubrication points is fed with a grease gun.

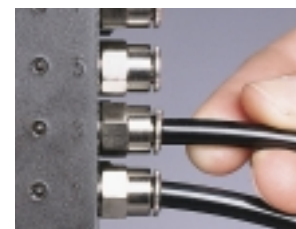
The Quickline tube splicer union is a great way to fix a broken line without replacing the whole line. Just clean the line ends, plug them into the connector and the line's repaired.

Quickline lube point connectors are ideal when fittings can be removed easily. All three varieties—straight, 90-degree elbow and

elbow swivel—connect much faster than using a typical screw connector, which requires the assembly of four components.

Zerk-Lock is Lincoln Industrial's other great time-saving connector. When removing a fitting is not practical, the Zerk-Lock grease fitting adapter is the answer. It connects any 1/8-inch male tube adapter directly to a grease fitting. Even when a fitting is self-tapered or pressed in, there's no need to drill it out and tap new threads with Zerk-Lock—a tremendous time saving.

Quickline and Zerk-Lock are designed to work well together. It's as simple as:



1. Install a Quickline into the divider valve and insert the line



2. Place a Zerk-Lock onto the fitting



3. Seal and tighten Zerk-Lock using a hammer and staking tool



4. Then thread a Quickline completely into the Zerk-Lock



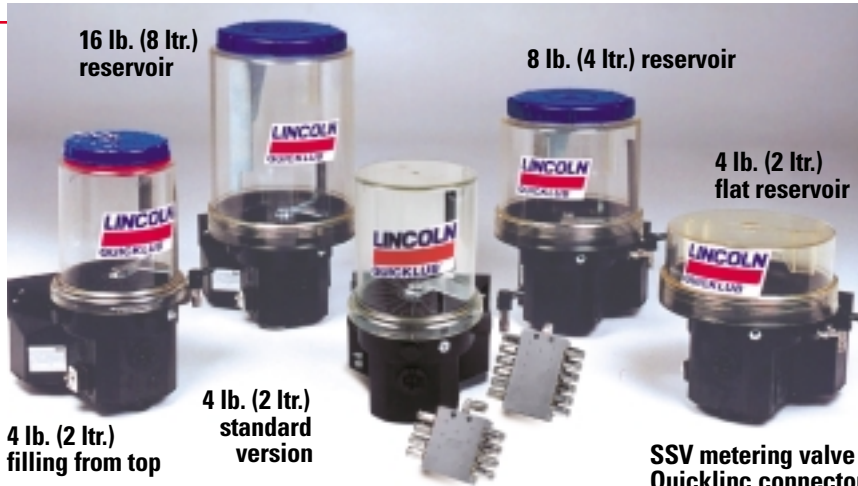
5. And plug the tube into the Quickline adapter

Model No. Description

252751	Valve outlet fitting with check for 1/4" nylon tubing
252752	Valve outlet fitting without check for 1/4" nylon tubing
252753	1/4" tube x 1/8" NPT male straight fitting
252754	1/4" tube x 1/8" NPT male 90° fitting
252755	1/4" tube x 1/8" NPT male 90° swivel fitting
252756	1/4" tube x 1/4"-28 male straight fitting
252757	1/4" tube x 1/4"-28 male 90° fitting
252758	1/4" tube x 6 mm male 90° fitting
252759	1/4" tube x 6 mm straight fitting
252760	1/4" tube x 1/4" tube splicer union
252761	1/8" NPSL female Zerk-Lock grease fitting adapter

The models are economy packaged, 50 pieces per carton.

Quickclub Lubrication Systems



Built to Lubricate Medium-Sized Industrial & Mobile Equipment

The Quickclub single-line progressive system provides a relatively simple and inexpensive method for centralizing or automating the lubrication process. Quickclub lubrication solutions range from a basic, centralized system using a manual grease gun to a fully automated system with lubricant supplied by 12 and 24 VDC electric and pneumatic pumps. Reliable metering valves supply the lubricant through feed lines to the lubrication points.

The Quickclub product range covers the lubrication requirements of most on-road and off-road equipment, as well as a variety of industrial machinery. For example, Quickclub is helping truck manufacturers significantly increase maintenance intervals (from 15,000 to 30,000 miles or from 45 000 to 60 000 kilometers). Quickclub also protects pins and bushings and other lube points on construction machines against humidity and dirt. And when you add a Quickclub system to agricultural equipment, there's one less problem at harvest time because you don't have to plan for any downtime to do maintenance.

Quickclub can supply a few large lubrication points or up to 100 or more points requiring standard amounts of lubricant. The Series 203 pumps come with 4, 8, or 16 lb. (2, 4 or 8 liter) reservoirs to satisfy various lubricant demands. The pumps can be equipped with four different elements to modify the output of grease per stroke. Using all three of its outlets, a Series 203 pump can either feed additional points or feed up to four independent lubrication circuits.

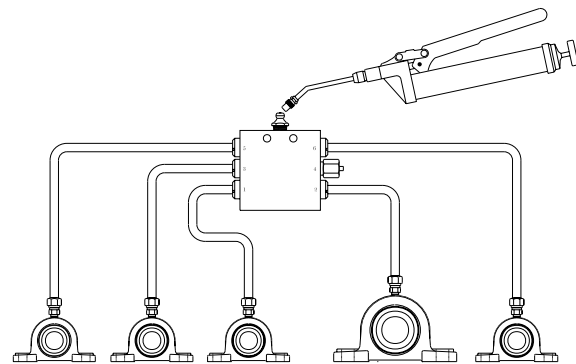
Quickclub meets the requirements of both the mobile and industrial markets because pumps come with five different controls (from a fixed pause time control to one with a microprocessor and low level control), or are configured so they can be used with every machine's PLC.

SSV metering valve with Quicklinic connectors

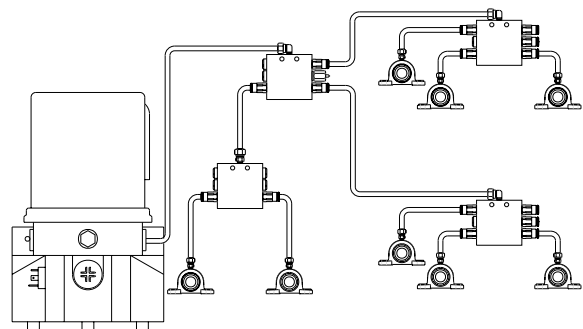
But there's even more. Some Quickclub pumps refill from the top. One pump is perfect for very low installation areas because it's only 9.3 inches (244 mm) high and has a flat 4 lb. (2 liter) reservoir. Quickclub can also be adapted to lubricate medium-sized hydraulic hammers with special anti-seize grease.

And now, with the QLS 301 joining the Quickclub "family," this versatile product line can provide a cost-effective lubrication answer to meet almost any need.

Ask for availability and delivery times, because only high-volume items are in stock in the U.S.



Manual single-point progressive system filled with a grease gun



Automated progressive system with an electrical pump

Recently Introduced PRODUCTS

New Centro-Matic® Integrated Pumps

We've taken the industry's best grease pumps for individual applications and integrated a control timer and solenoid valve to provide a complete unit. It could eliminate the need for costly PLC controls and speed up the installation of your next Centro-Matic system. Because the system is integrated, customers mount and assemble fewer components and installation time is reduced by as much as 70 percent when compared to a pump with separate controls.

Literature form number: 442870



ORSCO Series 150 for Chain Lubrication

The ORSCO 150 Series is now part of Lincoln Industrial's comprehensive line of chain lubrication solutions. Utilizing a patented spray nozzle, the ORSCO system mixes lubricant with air and applies it where needed, resulting in maximum lubrication and protection with minimum lubricant volume. This precisely targeted non-misting application keeps the oil away from products and out of the environment, and can reduce lubricant consumption by up to 90 percent.

Literature form numbers:

442842: Chain solutions 442885: ORSCO Capabilities 442879: Series 150

FlowMaster™ — Innovative Hydraulic Pump



Lincoln Industrial has introduced the industry's first fully hydraulic rotary-driven lubrication pump (patent pending). Developed for industrial, construction and mining applications, the compact pump features a rotary drive that offers maximum performance. With the capability of developing 6,000 PSI, it reliably pumps No. 2 grease in temperatures below 0°F (-20°C). With the built-in flow control, the hydraulic output of the lubricated machine can be adapted to meet the requirements of the lubrication system.

The new 60 pound container is also available with air-operated pump models.

Literature form number: 442885 Solutions, No. 1

Order more information on these products by contacting Lincoln Industrial Customer Service at 1-314-679-4200, Ext. 410.

SOLUTIONS

contains new product information for Lincoln Industrial customers.

Please direct ideas, comments or questions to:

Lincoln Industrial
Marketing Communications,
Tel: 1-314-679-4255 or 4256,
Fax: 1-314-679-4359
www.lincolnindustrial.com.

LINCOLN
INDUSTRIAL

One Lincoln Way
St. Louis, MO 63120-1578
USA

Phone 1-314-679-4200
Fax 1-314-679-4359
www.lincolnindustrial.com

Form 442892
© Copyright 1999
Printed in U.S.A.



A Pentair Company