

Change-over Valves DU1



DU1-GKS

Lincoln change-over valves come in pressure controlled, pneumatically operated, electric motor operated or hydraulically operated versions. They are primarily designed for use in two-line systems.

This pressure controlled change-over valve has a maximum operating pressure of 350 bar and is designed for use in two-line systems. The operating principle is similar to that of a 4/2 way valve which alternately discharges the lubricant fed by the pump into one of the two main lines while the other line is connected to the return line connection of the pump. Once a preset pressure is reached the change-over process is automatically initiated.

It is Available in Three Models:

Part No.	Model	Description
617-28683-1	DU1-G	mounted on a base plate
617-28619-1	DU1-GK	mounted on a base plate with indicator pin
617-28620-1	DU1-GKS	mounted on a base plate with indicator pin and limit switch

Technical Data

flow rate	maximum 14 liters/ hour (3.7 US gal/ hour)
operating pressure	maximum 350 bar (5075 psi)
change over pressure	minimum 140 bar (2030 psi) maximum 350 bar (5075 psi)
factory setting	170 bar (2465 psi)
threaded connections	G 1/2 female (BSPP)
operating temperature	-20° C to 80° C (-4° F to 176° F)
mounting position	variable
position switch	max.
nominal circuit voltage	500 V, 25–60 Hz
continuous current	10 A
operating current	4A

Dimensions

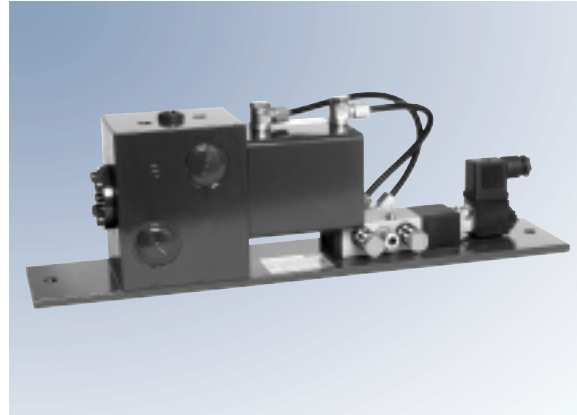
Model	Height	Width	Depth
DU1-GK 617-28619-1	195 mm (7.8 in)	190 mm (7.6 in)	100 mm (4.0 in)
DU1-GKS 619-28620-1	195 mm (7.8 in)	190 mm (7.6 in)	195 mm (7.8 in)

Change-over Valves MP2



This pneumatically operated change-over valve is designed for use in two-line systems and operates like a 4/2 way valve which alternately discharges the lubricant fed by the pump into one of both main lines, while the other main line is connected to the return line connection of the pump. It can also be used as a 3/2 way valve for grease systems.

It is available in four voltages, 24 VDC, 110 VAC, 110 VDC and 220 VAC.



MP2

Models

Part No.	Supply Voltage	Description
618-28965-2	24 VDC	MP2-24VDC
618-28964-2	110 V, 50/60 Hz	MP2-110AC/50-60Hz
618-28963-1	110 DC	MP2-110VDC
618-28966-2	220V, 50/60 Hz	MP2-220AC

Technical Data

flow rate	maximum 65 liters/hour (17 US gal/hour)
operating pressure	400 bar (5800 psi)
compressed air	max. 10 bar (145 psi)
threaded connections	G 3/4 female (BSPP)
operating temperature	-20° C to 70° C (-4° F to 158° F)
mounting position	variable
sound pressure level	< 70 dBA

Dimensions

	Height	Width	Depth
MP2	135 mm (5.4 in)	400 mm (16 in)	180 mm (7.2 in)

Also Available Hydraulically Operated: Model MHY1

Part No.	Supply Voltage	Description
618-28883-2	24 VDC	MHY1-24VDC

Technical data correspond to MP2.

Operating hydraulic pressure: max. 60 bar (870 psi)

Change-over Valves EM-U2



EM-U2

This electric motor operated change over valve is designed for use in two-line systems with a maximum operating pressure of 400 bar. It is available in 24 VDC and 230 VAC versions.

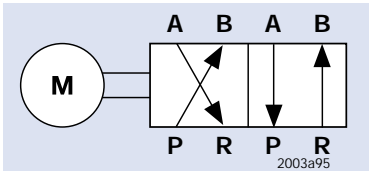
The principal of operation is similar to that of a 4/2 way valve which alternately discharges the lubricant fed by the pump into one of the two main lines while

the other line is connected to the return line connection of the pump. After all metering devices in the system have completed a half-cycle, the signaled change over process commences.

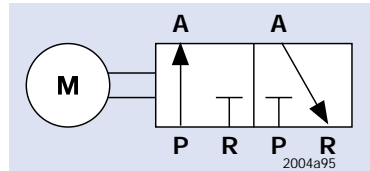
Depending on the version, the EM-U2 can also be used as a 2/2 or 3/2 way slider valve for lubrication circuits.

Models

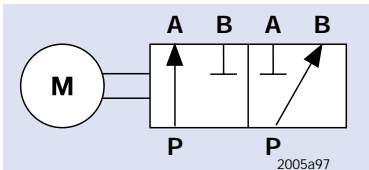
Part Nos.		Description
24 VDC Version	230 VAC Version	
618-28387-1	618-28388-1	change-over valve 4/2 way
625-28448-1	625-28450-1	3/2 way valve connection B closed
625-28449-1	625-28451-1	3/2 way valve connection R closed
625-28590-1	625-28591-1	2/2 way valve connections B & R closed



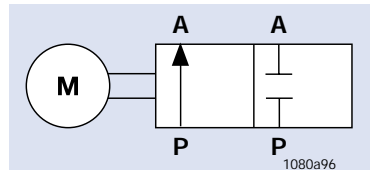
Change-over Valve
(4/2 Way Valve)



3/2 Way Valve
Connection B Closed



3/2 Way Valve
Connection R Closed



3/2 Way Valve
Connection B + R Closed

Technical Data

flow rate	maximum 65 liters/hour (17 US gal/hour)
operating pressure	maximum 400 bar (5800 psi)
threaded connections	G3/4 female (BSPP)
operating temperatures	-20° C to 80° C (-4° F to 176° F)
mounting position	variable
sound level	< 70 dBA
switching time	0.5 seconds
supply voltage	24 VDC or 230 VAC

Dimensions

	Height	Width	Depth
EM-U2	210 mm (8.4 in)	350 mm (14.0 in)	160 mm (8.3 in)