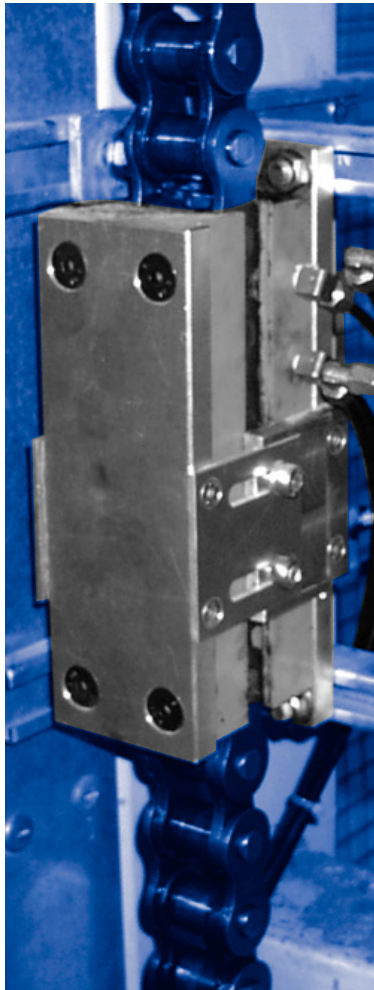


# Contact Lubrication with Guide Blocks



Contact Lubrication

The contact lubrication comprises 2 polymer-plastic blocks between which the chain runs. The guide blocks fit exactly to the size and type of chain (roller chains according to DIN 8187).

The upper block has channels that direct the lubricant to the chain. The lubricant is distributed along the length of the block allowing it to penetrate the chain.

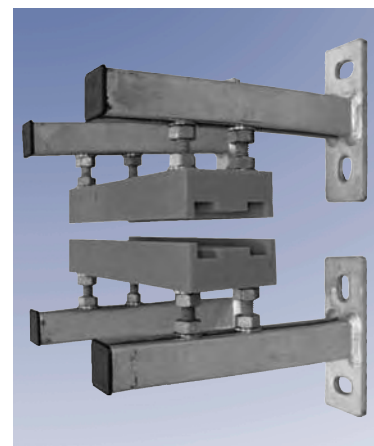
This system offers essential advantages - the worst of the dirt on the chain is cleaned off, the chain is guided and supplied with continuous lubricant. The contact lubrication has an extraordinary long life thanks to highly wear-resistant plastics that are very robust and insensitive to contamination and knocks.

### Applications

Contact lubrication is ideal for slow and fast moving chains (up to a max. of 40 m/min). All types of lubricant - from low viscosity oil to lubrication greases can be used. Lincoln centralized lubrication systems provide the optimum lubricant supply.

The system has been designed especially for chains in pallet conveyor systems, e.g. in the food and beverage industry. Pallet systems for return goods are particularly exposed to a high grade of contamination: wood chips, broken glass, and in the winter, ice particles stick to the chain and result in premature wear.

Other applications for a contact lubrication system are passenger or freight elevators as well as escalators.



Guide Blocks & Mounting

## Selection of Available Guide Blocks for Single Roller Chains

Chain Size	DIN ISO No.	Type	Guide Block Description	Part No.
3/4" x 7/16"	12 B-1	upper*	compl. 200 RK-1F 3/4 x 7/16 2S	526-32700-1
		Lower**	compl. 200 RK-1F 3/4 x 7/16	526-32699-1
1" x 17 mm	16 B-1	upper*	compl. 200 RK-1F 1" x 17 mm 2S	526-32704-1
		Lower**	compl. 200 RK-1F 1" x 17 mm	526-32703-1
1 1/4" x 3/4"	20 B-1	upper*	compl. 200 RK-1F 1 1/4 x 3/4 2S	526-32708-1
		Lower**	compl. 200 RK-1F 1 1/4 x 3/4	526-32707-1
1 1/2" x 1"	24 B-1	upper*	compl. 200 RK-1F 1 1/2x 1 2S	526-32706-1
		Lower**	compl. 200 RK-1F 1 1/2x 1	526-32705-1

## Selection of Available Guide Blocks for Double Roller Chains

Chain Size	DIN ISO No.	Type	Guide Block Description	Part No.
3/4" x 7/16"	12 B-2	upper*	compl. 200 RK-2F 3/4 x 7/16 3S	526-32710-1
		Lower**	compl. 200 RK-2F 3/4 x 7/16	526-32709-1
2 1/2" x 1 1/2"	40 B-2	upper*	compl. 200 RK-2F 2 1/2 x 1 1/2 3S	526-32714-1
		Lower**	compl. 200 RK-2F 2 1/2 x 1 1/2 3S	526-32713-1

\* with lubricant connections M 6x1 (2S = 2 lubricant connections, 3S = 3 lubricant connections)

\*\* without lubricant connections