

# Spray Systems, Chain Lubrication and Specialty Systems

Product Catalogue / Second Edition 2005



Productivity is key in today's global economy. Proper lubrication increases uptime and makes maintenance routines simple.

# Lincoln Company Profile



## Our Experience

Lincoln was established in 1910 and is the long-standing world leader in grease lubrication systems and equipment. Decades of business experience have provided us with a high level of expertise and know-how within the lubrication system industry. As a pioneer in the industry, we will continue being a trendsetter confidently providing our customers with the best lubrication system solutions in both price and quality.



## Our Service

Our customer service includes the consulting, engineering and planning of customer-oriented systems for all applications, the manufacturing of standard components such as pumps, metering devices or control equipment, the installation and start up of lubrication systems on site in all parts of the world, as well as the customer training, and after-market service.

## Our Quality

Our certified Quality Management System according to DIN EN ISO 9001, our expertise, consulting qualities and inventiveness, lead the way for future customer-oriented, economical and intelligent solutions.

## Our Environmental Management System

Our Environmental Management System according to DIN EN ISO 14001 and EMAS, is an integral part of our company philosophy that reflects Lincoln's future orientation.



## Our Product

Lincoln lubrication systems reduce friction and wear; thereby, decreasing maintenance costs, improving productivity, ensuring a higher level of safety and contribution to the environment.

## Our Motto

Keep in motion –  
Bleiben Sie mit uns in Bewegung!

# Table of Contents

## Spray Systems and Special Systems



### Schematic Spray System

4 - 5

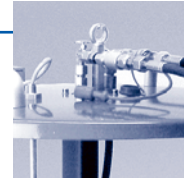
Schematic



### SAF Pumps

6 - 7

Example



### Spray Nozzles

8

### Accessories

9 - 10

Accessories, Mounting Plates,  
Lubricant Filters, Pressure Relief



### EOS

10 - 11

Single-line Oil System for Lubrication of  
Slow Moving Chains



### Contact Lubrication

12

### Quicklub

13

Progressive System for Grease or Oil - for  
Slow Moving, Small Chains



### Centro-Matic

14

### PMA 2 Solenoid Pump

15 - 16

### Orsco

17

### Cobra Chain Lubricator

18

### CRL 101

19

### Oil Circulation Systems

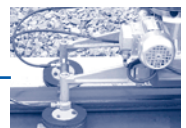
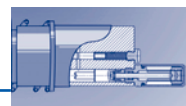
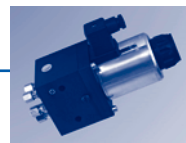
20

### Supply Systems

21

### Index

22



#### Part No.

515-30955-1  
515-31224-1  
515-31225-1  
515-31252-2