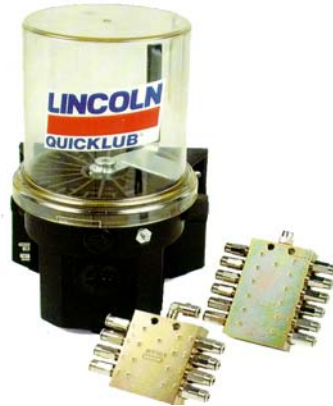


# GROVE®

Provides: Lincoln Automatic Lubrication Systems on all GMK 5100, 5200 and 7450 All Terrain Hydraulic Cranes.

## System Benefits:

- Decreases Bearing Failures
- Improves Machine Reliability
- Improves Productivity
- Reduced Labor cost
- Improved Safety



## System Includes:

Pump station, meter valves, all supply line & feed line tubing/hose, and factory installation



**GMK 5100**

<u>Location</u>	<u># of Points</u>
Upper Carriage	9
Under Carriage _____	13



**GMK 5200**

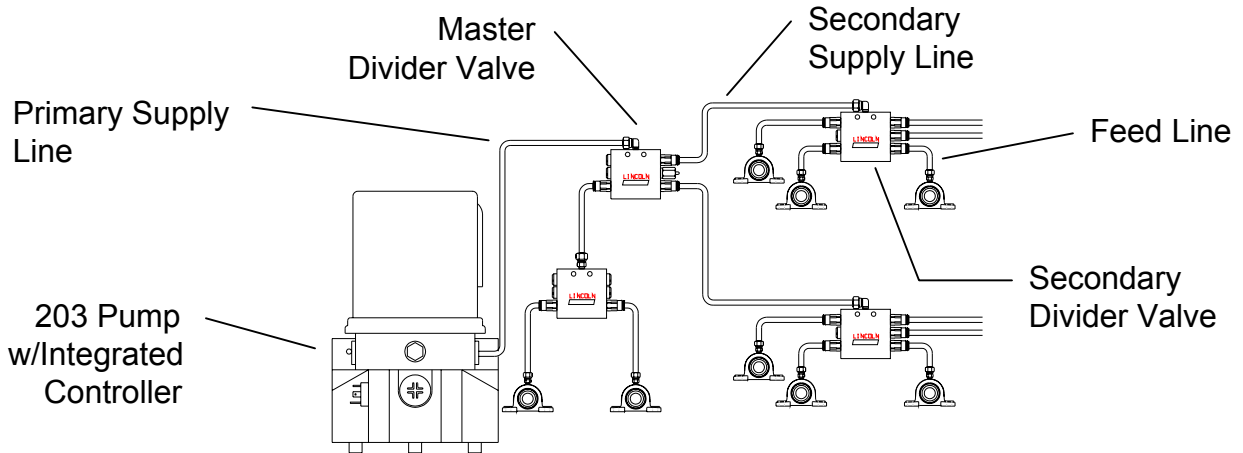
<u>Location</u>	<u># of Points</u>
Upper Carriage	9
Under Carriage _____	13



**GMK 7450**

<u>Location</u>	<u># of Points</u>
Upper Carriage	TBD
Under Carriage _____	6

## Automatic 203 Pump System



### System Operation

#### System operation:

- 1) The pump is actuated automatically by an adjustable controller.
- 2) The lubricant is delivered to the divider valves through the supply line.
- 3) The divider valve dispenses lubricant in measured amounts directly to the bearing through the feedline. Visual indication of cycle pin assures that all points are lubricated.

#### Automatic Systems:

A controller turns the pump on for a fixed time at pre-set intervals. The valves cycle, lubricating the bearings as long as the pump is running. It stops when the controller times out.

Secondary divider valves expand system capacity and design flexibility.

### Specifications

#### Divider Valves

- Output per outlet, in<sup>3</sup>,(cm<sup>3</sup>): SSV=0.012 (0.2)  
SSVM=0.0037 (0.06)
- Max. outlets per valve: SSV, 18; SSVM 12
- Materials: Carbon steel SSV, SSVM  
Stainless Steel SSV

#### 203 Pumps

- Power: 12 or 24 Volt DC
- Output per minute: 0.171 in<sup>3</sup> (2.8cm<sup>3</sup>)
- Reservoir capacity: 4 lb., 122 in<sup>3</sup>  
(1.8 kg, 2000 cm<sup>3</sup>)
- Max. system pressure: 3600 psig (248 bar)
- On time: minimum 2 minutes; max. 30 minutes
- Off time: minimum 1 hour; max. 15 hours
- Enclosure rating: IP54 (protected from water spray, all directions)

# GROVE®

Corporate Headquarters  
Grove Worldwide  
P.O. Box 21  
1565 Buchanan Trail East  
Shady Grove, PA 17256



Lincoln  
One Lincoln Way  
St. Louis, MO 63120  
1-314-679-4200  
FAX:1-314-679-4359