



TECHNICAL SERVICE BULLETIN

Bulletin Number: DC-2174R

Date: 11/02/05

Affected Model(s): All SSV/SSVM Divider Valves

Subject: Recommended Torque Specifications

Recently we have been informed of newly established torque values on the subject Divider Valves from our Lincoln Germany manufacturing facility. We felt it necessary to share this information with you as quickly as possible as our German Engineering and Product Management departments feel that operational ramifications may be experienced if these torque settings are not adhered to.

Over-tightening may distort the block itself and the internal valve spools and prevent them from functioning properly. Installations utilizing a standard QLS301, 401, or 203 pumps may not offer enough power to break the pistons loose if the proper torque specifications are not used. The following chart lists the recommended torque values for SSV and SSVM metering devices.

Tightening Torques-

Divider Valves-SSV/SSVM.....ft. lbs. (+/- 10%-unless otherwise noted)	
Piston closure plug.....	13
Outlet closure plug.....	11
Inlet fitting	
--Screw type.....	13
--Push-in type.....	8
Outlet fitting	
--Screw type.....	13 (+/- 5%)
--Push-in type.....	9 (+/- 5%)
Compression nut on to inlet fitting.....	8
Compression nut on to outlet fitting, screw type	
--Plastic tube.....	8
--Steel tube.....	8
Piston detector in metering device.....	11
KN switch on device.....	13
Install metering device.....	8

Additionally, we would like to stress the importance of a thorough inspection of all system components (pump, elements, check valves, lube lines, primary valve, secondary valves, and all outlet fittings). This inspection should include all components on an individual one basis and the system should not be commissioned until it is accomplished and the total system is found to be functional. Failure to comply can and most likely will cause unnecessary service issues and unnecessary system down time.

The attached service page (Sec.Q4-Page1A) offering will be updated to offer the additional torque specifications.

QUICKLUB® PROGRESSIVE DIVIDER VALVES

SSV & SSVM SERIES

LINCOLN
INDUSTRIAL

SSV Series

SPECIFICATIONS:

Output Per Outlet: 0.012 cu. in. (0.2 cc) per piston cycle

Max. Operating Pressure: 4350 psi (300 bar)

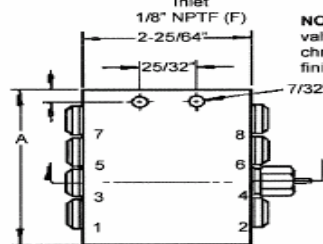
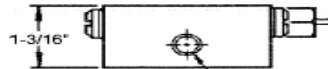
Min. Operating Pressure: 290 psi (20 bar)

Max. Press. Differential between Two Outlets:

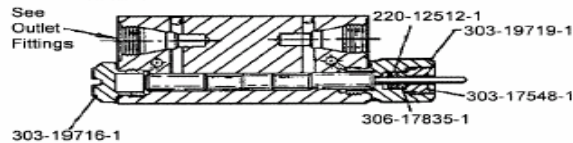
1450 psi (100 bar)

Model No.	Number of Outlets	Monitoring	Dimension A (inches)
619-27121-1	6	---	2-3/8"
619-27122-1	6	Indicator Pin	2-3/8"
619-26396-2	8	---	2-15/16"
619-26646-2	8	Indicator Pin	2-15/16"
619-26844-1	10	---	3-17/32"
619-26845-2	10	Indicator Pin	3-17/32"
619-26398-2	12	---	4-1/8"
619-26648-2	12	Indicator Pin	4-1/8"
619-27292-1	18	Indicator Pin	6-1/2"

Note: All outlet fitting and closure plugs must be Quicklub® fittings to assure correct function of divider valves (order separately). See reverse side for selection.



NOTE: Series "B" valves have a black chromate plated finish.



Series "B"

SSVM Series

SPECIFICATIONS:

Output Per Outlet: 0.0037 cu. in. (0.07 cc) per piston cycle.

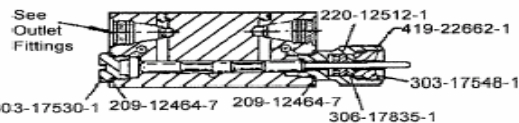
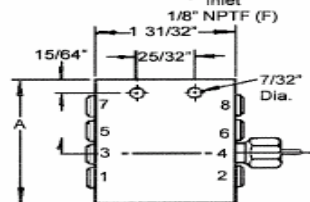
Max. Operating Pressure: 1450 psi (100 bar)

Min. Operating Pressure: 220 psi (15 bar)

Max. Press. Differential Between Two Outlets:

700 psi (50 bar)

Model No.	Number of Outlets	Monitoring	Dimension A (inches)
619-26764-1	6	---	1-29/32"
619-26765-3	6	Indicator Pin	1-29/32"
619-26650-1	8	---	2-11/32"
619-26651-3	8	Indicator Pin	2-11/32"
619-26848-1	10	---	2-13/16"
619-26849-2	10	Indicator Pin	2-13/16"
619-26653-1	12	---	3-1/4"
619-26654-3	12	Indicator Pin	3-1/4"



Series "A"

LINCOLN
INDUSTRIAL

One Lincoln Way
St. Louis, MO 63120-1578
(314) 679-4200

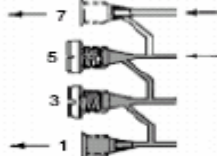
Copyright 2000
Printed in the U.S.A.
From 402997

SECTION - Q4
PAGE - 1A

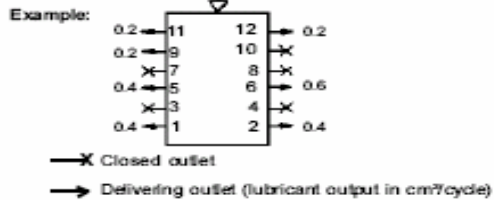
COMBINING OUTPUTS

Outputs from adjacent outlets may be combined by installing a closure plug in one or more outlets. Lubricant from a plugged outlet is redirected to the next adjacent outlet in descending numerical order.

IMPORTANT: Outlets 1 and 2 (bottom) must not be plugged as they have no crossport passage to the next adjacent outlet (top).



In Fig. 1, Outlets 1, 3, and 5 are combined and directed through Outlet 1. In this example, Outlet 1 will dispense three times as much lubricant as Outlet 7. The tube ferrule in Outlet 7 blocks the crossport passage so that lubricant flow is directed through Outlet 7. Output shown in CC.



OUTLET FITTINGS FOR SSV DIVIDER VALVES		OUTLET FITTINGS FOR SSMV DIVIDER VALVES	
	<p>1/4" O.D. tubing must be used for supply lines from a primary to a secondary divider valve. 1/8" O.D. tubing can only be used for feed lines (from divider valve to bearing point). SSMV Divider valves cannot be used as primary divider valves in a secondary system.</p>		

NOTE: When using an eight outlet pump, the pump is considered a primary divider valve.

Part	Description
209-12464-7	Copper Gasket
220-12512-1	U-Cup Packing
303-17528-3	Closure Plug
303-17530-1	Closure Plug
303-17548-1	packing retaining screw
303-19150-1	Packing housing
306-17835-1	Gasket
419-22662-1	Packing Housing

Problem	Solution
1) Divider valve cycles slowly or fails to cycle.	<p>Soap build-up in the internal ports of divider valve - Remove pistons and wash divider valve block in a bath of solvent. IMPORTANT: Each piston MUST be returned to its respective bore during reassembly. NOTE: If blockage is too severe and hard, replace the divider valves.</p> <p>Blockage in delivery line - Loosen fittings at divider valve outlets until lubricant under pressure emerges from outlet. This indicated the blocked delivery line. Trace line to determine cause of blockage and resolve problem. Resighten all outlets.</p>

As always, if you have questions or concerns, please do not hesitate to call Lincoln Technical Services at 314/679-4200, Ext. 4782 or fax us at 314/679-HELP (4357).

Regards,

Barry Frankum