



## **TECHNICAL SERVICE BULLETIN**

**Bulletin Number: DC- 2251**

**Date: 3/5/2009**

**Affected Model(s): 3614/3624 Waste Oil Drains**

**Subject: Operation/Emptying Instructions**

---

Recently we have added instructional decals on the 3614 and 3624 Waste Oil drains describing necessary details that must be followed when using either drain-whether it be draining oil from a vehicle, or emptying the used oil into the bulk storage tank. Please pay special attention to the position of valves "B" and "C". If the valves are not properly set, the overall timeframe for an oil change and evacuating a full drain bowl will be greatly affected. In house testing showed us that the oil from a simple 5 quart oil change took 85 minutes to completely drain the oil into the tank if valve "B" was open and valve "C" was left closed. With "B" and "C" both opened properly the time to empty the drain bowl was cut down to 3 minutes.

Details of how to use both drains are included in the owner's manual, but we felt that it should be displayed on the product. The detail below is what you will now also find on the units. We added the diagram detailing the valves and necessary positions for your convenience.

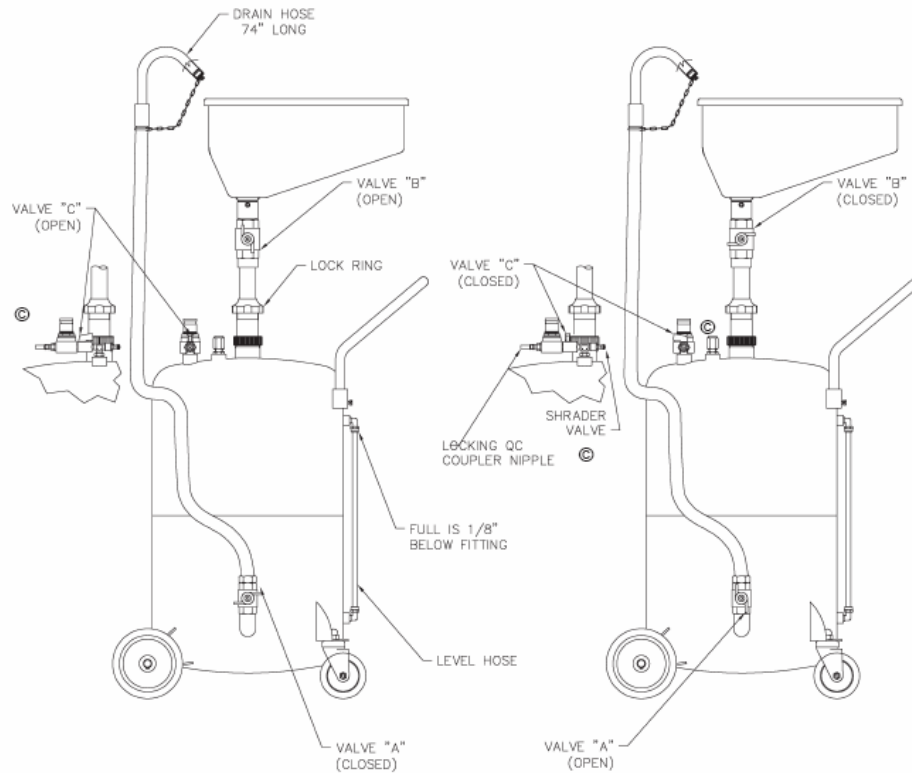
As always, if you have questions or concerns, please do not hesitate to call Lincoln Technical Services at 314/679-4200, Ext. 4782 or fax us at 314/679-HELP (4357).

Regards,

Barry Frankum



## Model 3614 Used Oil Receiver



### OPERATION

To position the oil drain bowl, loosen lock ring, raise the drain bowl to the desired position and retighten.

#### **IMPORTANT!**

When draining the oil from the vehicle, open Valve B to allow the oil to flow into the tank and open Valve C to allow air to vent as tank fills.

Level indicator shows the quantity of oil in the tank.

#### **IMPORTANT!**

Never fill the tank over the maximum level given by the level indicator.

© Indicates change

### EMPTYING TANK

Close ball valve B.

Connect compressed air to air nipple, Open Ball Valve C, allowing tank to pressurize up to max. pressure 7.25 PSI (0,5 bar).

OR

©When using Schrader Valve, close Ball Valve C. Check that all three shut off valves are closed. Apply air pressure through Schrader valve until air comes out of the vent valve.

Fasten drainpipe to the used oil drum.

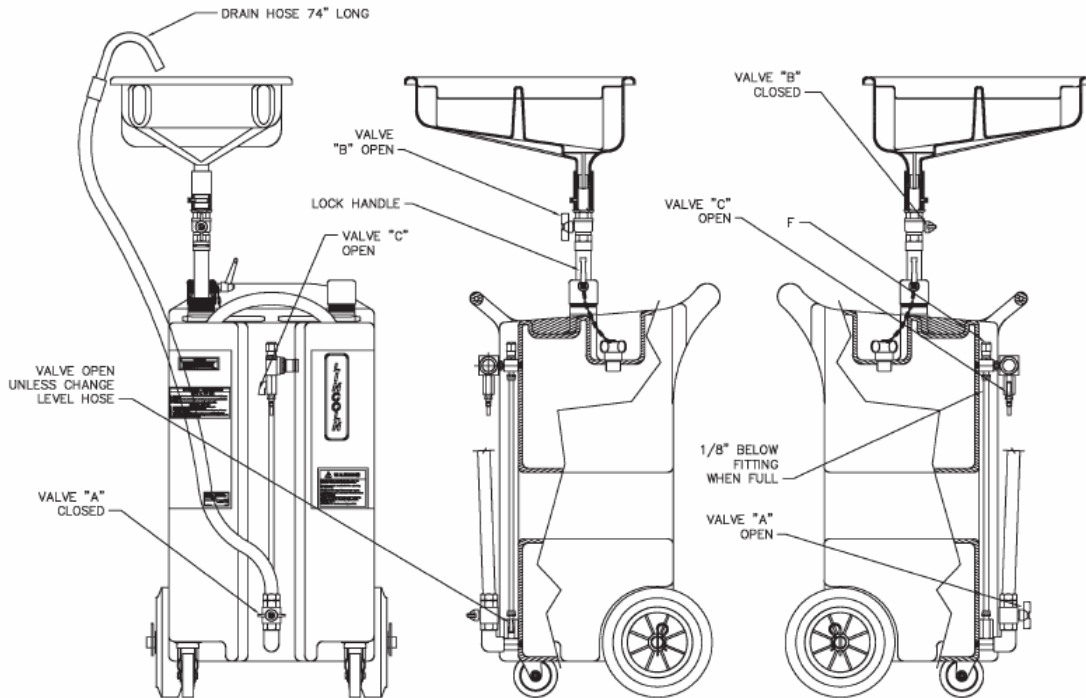
Open Ball Valve A.

Once emptying is complete, disconnect compressed air and close Ball Valve A.

Re-open Ball Valve B.

The Used Oil Receiver is fitted with a safety valve (F), calibrated to 14.5 psi [1 bar].

# MODEL 3624 Used Oil Receiver



## OPERATION

To position the oil drain bowl, loosen locking ring, raise the drain bowl to the desired position and retighten.

### IMPORTANT!

When draining the oil from the vehicle, open Valve B to allow the oil to flow into the tank and open Valve C to allow air to vent as tank fills.

Level indicator shows the quantity of oil in the tank.

### IMPORTANT!

Never fill the tank over the maximum level given by the level indicator.

## EMPTYING TANK

Close Ball Valve B.

Connect compressed air to air nipple, open Ball Valve C, allowing tank to pressurize up to max. Pressure 7.25 PSI (0.5 bar).

Fasten drainpipe to the used oil drum.

Open Ball Valve A.

Once emptying is complete, disconnect compressed air and close Ball Valve A.

Re-open Ball Valve B.

The Waste Oil Receiver is fitted with a safety valve (F), calibrated to 14.5 psi [1 bar].