

Subject: Series 20, 25, and 40 Pump Troubleshooting

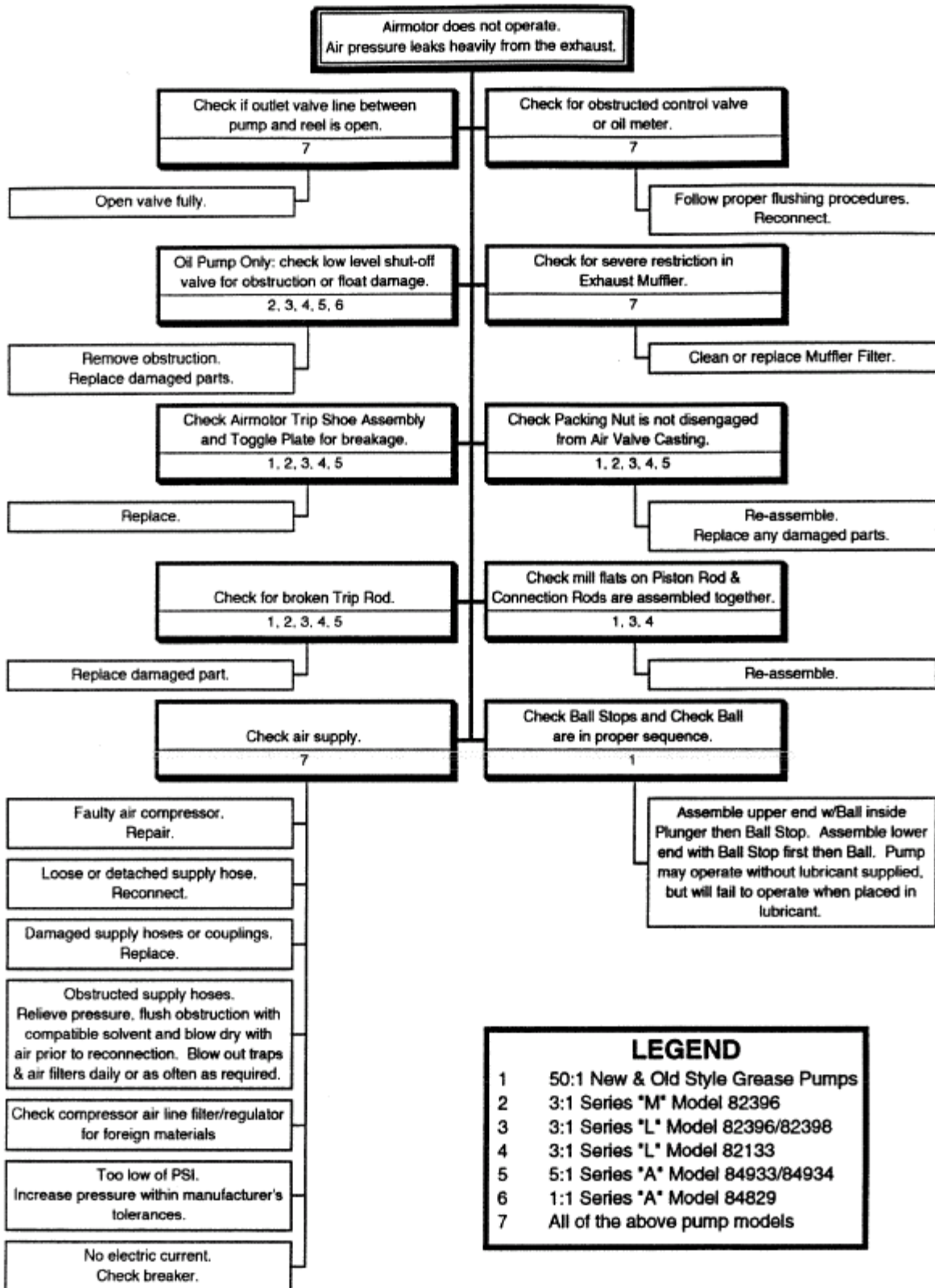
LINCOLN SERVICE DIAGNOSTIC GUIDES

All Lincoln equipment is engineered for long life and trouble-free maintenance when properly used according to manufacturer's specifications.

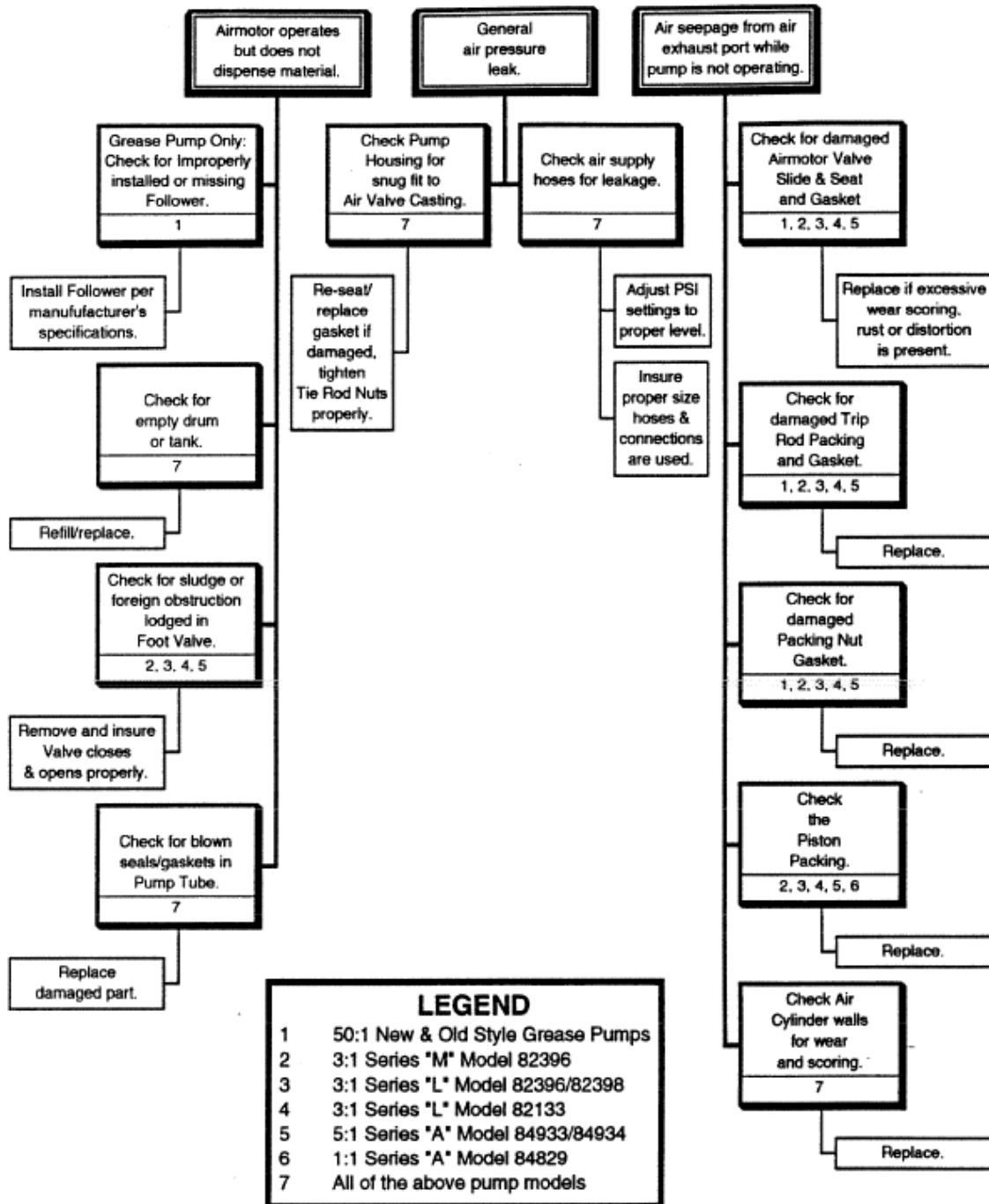
- ◆ Proper disassembly and assembly procedures must be followed using only Lincoln factory supplied parts and repair kits. Use proper tools to avoid damage to unit and components
- ◆ Replacement of all parts contained in Lincoln Repair Kits is necessary to insure proper operation upon repair.
- ◆ Pumps are design to dispense only those fluids compatible with manufacturer's recommendations.
- ◆ Any alteration or modification of any equipment voids warranties and may result in equipment damage and/or serious personal injury, fire, explosion, or property damage.
- ◆ **ALWAYS** follow manufacturer's Pressure Relief Procedures prior to checking or servicing any part of the system.

If the following procedures do not correct an equipment problem, contact the factory. When submitting equipment to be repaired, be sure to state the nature of the problem and indicate if a repair cost estimate is required or if covered under warranty.

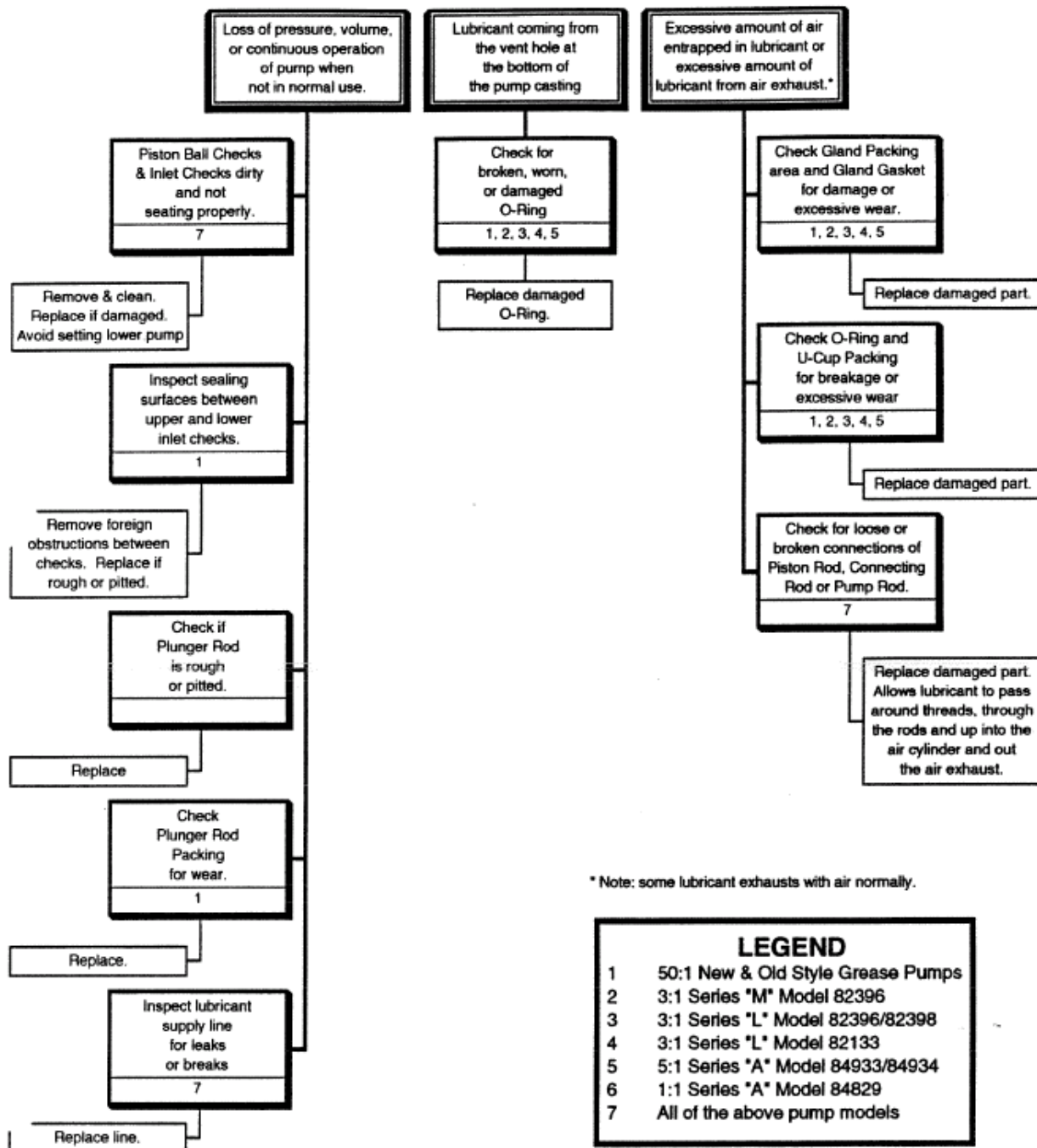
SERVICE DIAGNOSTIC GUIDE



SERVICE DIAGNOSTIC GUIDE



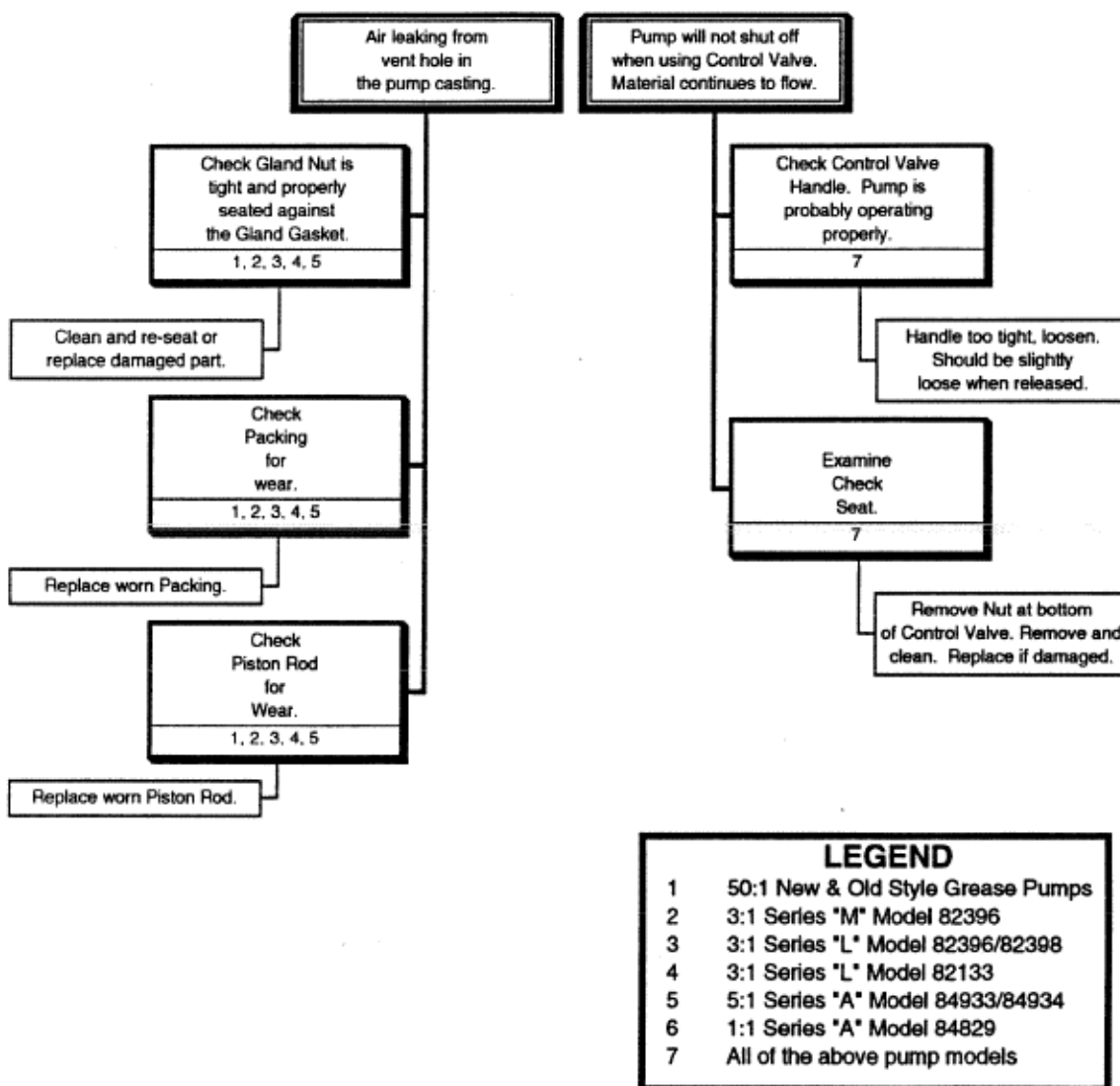
SERVICE DIAGNOSTIC GUIDE



* Note: some lubricant exhausts with air normally.

LEGEND	
1	50:1 New & Old Style Grease Pumps
2	3:1 Series "M" Model 82396
3	3:1 Series "L" Model 82396/82398
4	3:1 Series "L" Model 82133
5	5:1 Series "A" Model 84933/84934
6	1:1 Series "A" Model 84829
7	All of the above pump models

SERVICE DIAGNOSTIC GUIDE



Please note: These are general instructions for trouble-shooting our series 20 and 40 pumps. Per the legend the 282396 and 282398, series 25 are not included, but the principles are exactly the same. For more specific information, please refer to the appropriate service page.