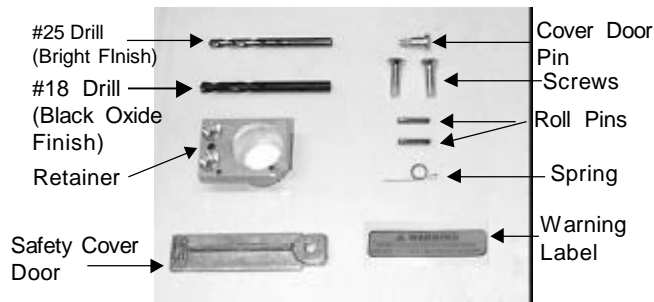
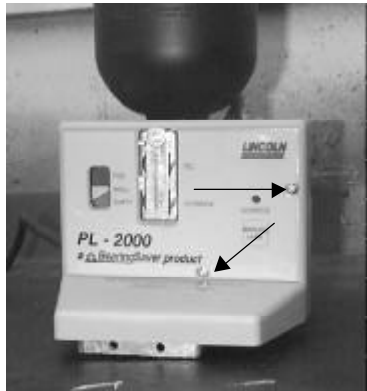


PL2000 RETROFIT INSTRUCTIONS

Preview: This retrofit should take approximately 10 minutes. Tools required are a large wide blade screwdriver, regular pliers, needle nose pliers, file, electric portable drill, phillips screwdriver and small hammer.



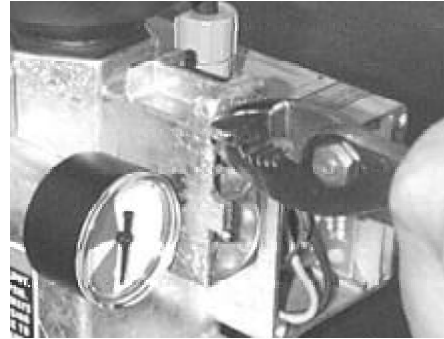
1. Remove the two screws, which secure the plastic cover. Remove the plastic cover.



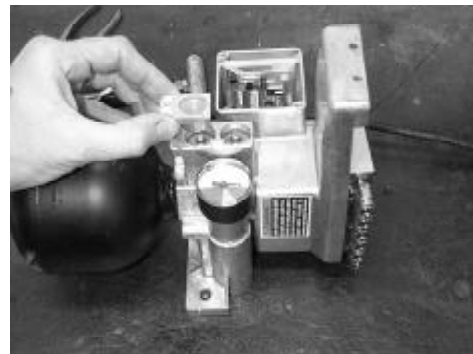
2. Note the arrangement of the spring, pin and door before removing. Refer to the picture below to pry off the safety cover door. Pry off cover door as close to pin as possible.



3. After safety cover door is removed use a pair of pliers to break off spring stop lug from casting.



4. After removing lug use a file to remove any remaining material to produce a flat surface.
5. Now insert the retainer into the top filler fitting recess until it stops against the fitting body.



6. Insert the larger of the two drills (#18 black oxide finish) into a high-speed drill. While using the retainer as a template, hold it centered by the sides, as pictured below, and spot drill the two holes located in the upper corners of the insert. When spot drilling, only drill approximately 1/16" into the casting.



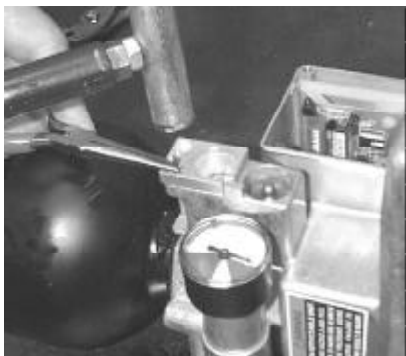
7. Remove the retainer from the casting and change to the smaller drill bit (#25 bright finish).
8. With retainer removed and drill positioned perpendicular to the casting surface, drill through the casting with the #25 drill. Use a drop or two of lubricating oil while drilling.



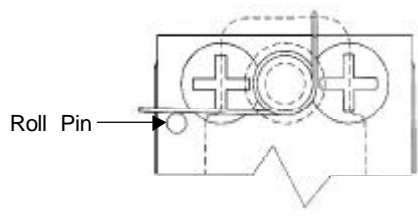
- Blow off all chips from the drilling area and insert the retainer again. Assemble the two #8-32 screws through the holes in the retainer so that the retainer is attached firmly to the casting.



- Assemble the two roll pins into the retainer as shown in the picture below. Use a small hammer to tap them in so that they are flush with the bottom side of the retainer.



- Insert cover door pin through safety cover door and spring and arrange the end of the spring so that it rests against the end of the upper roll pin similar to the arrangement before removing the door. Spring should be causing the door to close in a clockwise rotation and rest against the roll pin. Refer to the drawing at the top of the next column.



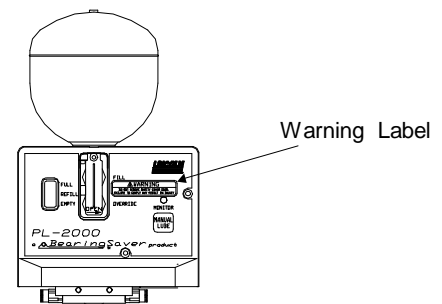
- After the safety cover door and spring are properly placed so that the door closes against the roll pin, the cover door pin should be tapped into the casting using a small hammer.



- Replace the plastic cover and secure it with the two screws.



- Apply the warning label to the cover as shown in the drawing below. Be sure that the plastic cover is thoroughly cleaned of any grease before applying label.



- This should complete the retrofit process.